

## 1:12 RC12L ON ROAD CATALOG

**CATALOG #12L    October 1997**

This free catalog is updated yearly; is yours current?  
Prices subject to change without notice.

If you cannot obtain parts from your distributor or dealer, you may order them  
directly from us.

**(We're sorry, you cannot order car kits from us.)**

For the latest news and online help, visit

<http://www.rc10.com>

### ORDERING INSTRUCTIONS

1. Write out order on separate sheet of paper if Order Form is missing. Include part no., quantity, and price of each item. **Include your phone no., full name and return address. DO NOT SEND CASH. NO CREDIT CARD ORDERS ACCEPTED.**
2. **California residents only** add sales tax: 7.75% in Orange County, 6.25% elsewhere.
3. **Add shipping fee of \$4.25** to all orders, except for faster Red, Orange & Blue Label services and international orders, which require extra charges.
4. **C.O.D. fee is \$4.75** (C.O.D. = "Cash On Delivery")
5. All international orders must be prepaid by International Money Order in US funds.
6. Mail order to: **Associated Electrics, Inc.**  
3585 Cadillac Ave.  
Costa Mesa, CA 92626 USA
7. Or call (714) 850-9342. **Please have your order ready before calling.** Or FAX: 714-850-1744. **Include your phone no., full name and return address.**

### RC12LC COMPETITION GRAPHITE KIT

4014	RC12LC COMPETITION GRAPHITE KIT. Complete graphite rolling chassis kit including front & rear ball bearings. DOES NOT INCLUDE RADIO, BODY, MOTOR, OR BATTERIES	1	250.00
------	--	---	--------

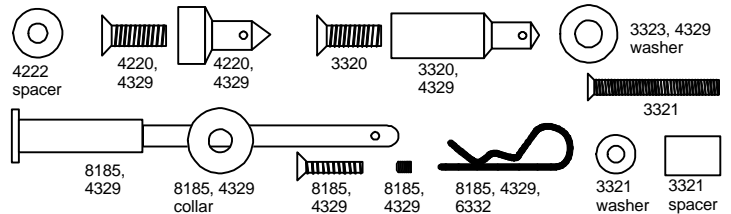
### LRP ELECTRONIC SPEED CONTROLS

*Associated is the exclusive importer for North and South America of the LRP digital electronic speed control. It uses a miniature digital computer that results in a state-of-the-art speed control that surpasses every other type available.*

LRP 8067	LRP IPC DIGITAL ELECTRONIC SPEED CONTROL, winning speed control for both 2WD & 4WD at the 1995 IFMAR 1:10 Off Road World Championships, and 1996 IFMAR 1:10 On Road World Championships.	1	239.50
LRP 8304	LRP RUNNER electronic speed control, forward, reverse, EMK brake, w/thermal protection. Recommended motor: 20 turn or higher wind motor	1	79.95
LRP 8317	F1 DIGITAL electronic speed control, forward, reverse, EMK brake, w/ thermal protection. Recommended motor: 16 turn or higher wind motor.	1	99.50
LRP 8322	F1 POWER DIGITAL electronic speed control, forward, reverse, EMK brake, with thermal protection and adj. current limiter. Recommended motor: 12 turn or higher wind motor.	1	132.00
LRP 8335	F1 BULLET DIGITAL electronic speed control, forward reverse, EMK brake, with thermal protection and adj. current limiter. Recommended motor: No	1	175.00

	Limit.		
LRP 8341	SPRINTER electronic speed control, forward, EMK brake, with adjustable current limiter & thermal protection. Recommended motor: stock motor.	1	79.95
LRP 8346	INDY 200 DIGITAL electronic speed control, forward, EMK brake, with adjustable current limiter & thermal protection. Recommended motor: 13 turn or higher wind motor.	1	99.50
LRP 8357	INDY 400 DIGITAL electronic speed control, forward, EMK brake, with adjustable current limiter & thermal protection. Recommended motor: 11 turn or higher wind motor.	1	132.00
LRP 8361	INDY 600 DIGITAL electronic speed control, forward, EMK brake, with adjustable current limiter & thermal protection. Recommended motor: no motor limit.	1	164.00

### BODY ACCESSORIES



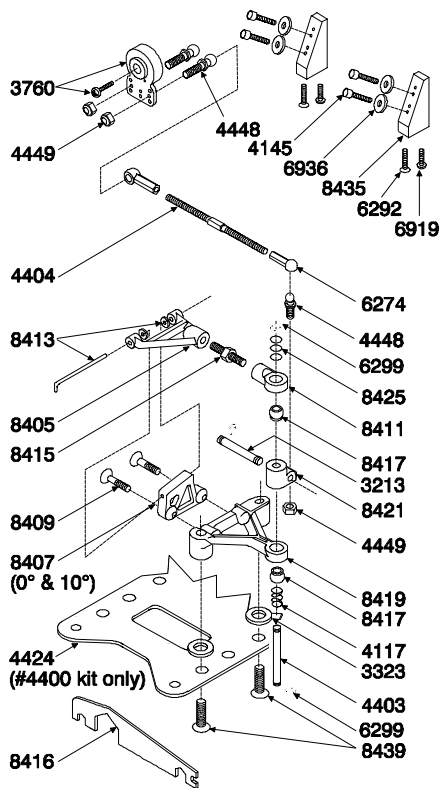
3181	DRIVER, clear	1	1.00
3183	WING ONLY, clear	1	1.00
6182	HIGH DOWN FORCE WING, 5 1/2"	1	2.00
3188	HIGH DOWN FORCE SPORTS WING	1	1.50
3320	FRONT BODY MOUNTS with hardware	pr	1.50
3321	FRONT BODY MOUNT SPACERS with hardware	pr	2.00
3323	THICK ALUM. WASHER, #8 for ride height adjustment	12	1.50
3190	WING KIT with mounts	1	3.50
4329	BODY MOUNT KIT, front and rear	1	5.00
4220	SHORT FRONT BODY MOUNT with hardware	pr	1.50
4222	FRONT BODY MOUNT SPACER, 3/16"	pr	1.00
6181	HIGH DOWN FORCE WING KIT, includes #6182 wing, #6910 wing mounts and wire	pr	1.75
6190	WING MOUNTS, adjustable (Wing-Things)	pr	1.75
6193	SUPER WING THINGS, aluminum. Fits .065" and .078" wire	pr	3.50
6332	BODY CLIPS	6	.75
8185	REAR BODY MOUNT, 3.00"	pr	3.50

### DECALS

*Request Associated's Pictorial Catalog for full color pictures of decals*

3809	"RC12L" DECALS. Fluorescent red & yellow. (8.5" x 5" sheet)	1	2.00
3817	BUMPER STICKER, 1 large, 1 small	1 ea.	4.00
3818	TEAM ASSOCIATED LOGO decal sheet, Mylar peel and stick, black, six decals	1	1.00
3819	TEAM ASSOCIATED LOGO decal sheet, Mylar peel and stick, white, six decals	1	1.00
6196	MISC. SPONSOR decal sheet, 5 colors	1	2.00

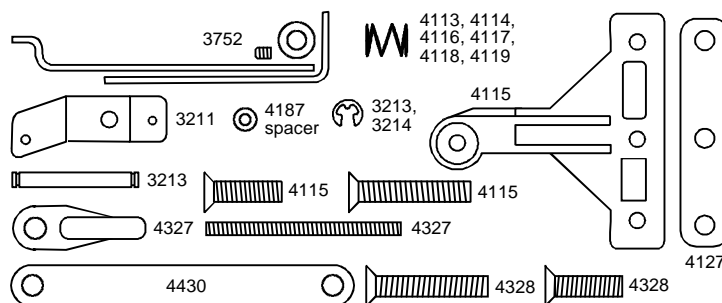
## DYNAMIC STRUT FRONT END



4400	DYNAMIC STRUT FRONT END KIT, with #4424 RC12LS/LW graphite chassis. (NOTE: To use this chassis on an RC12L, you must use the T-bar, T-bar spacer, and lower rear brace from the RC12LS/LW.)	1	79.00
4401	DYNAMIC STRUT FRONT END KIT, without chassis. (Will bolt onto standard 12L & early 12LW without modifications.)	1	39.00
4403	KINGPINS	pr	4.00
4404	TURNBUCKLE, 1.75" for #4400 & #4401	pr	3.00
4424	CHASSIS, GRAPHITE (replaces #4425 RC12LW graphite chassis to simplify installation of body mounts for #4400 & #4401 dynamic strut front end kits.)	1	40.00
8405	UPPER SUSPENSION ARMS	pr	3.00
8407	UPPER SUSPENSION ARM MOUNTS	4	3.50
8409	UPPER SUSPENSION ARM SCREW, 4-40 X 1/2" FLAT HEAD Shoulder Screw	4	1.50
8411	UPPER SUSPENSION ARM EYELET	pr	1.50
8413	UPPER SUSPENSION ARM HINGE PIN with caster shims	pr	2.00
8415	UPPER SUSPENSION ARM TURNBUCKLES	pr	2.00
8416	TURNBUCKLE WRENCH	1	2.50
8417	UPPER & LOWER SUSPENSION ARM PIVOT BALL	4	6.00
8419	LOWER SUSPENSION ARM	pr	3.50
8421	OFFSET STEERING BLOCK	pr	2.00
3213	STUB AXLE	pr	2.50
8425	KINGPIN SHIM	10	1.50
8441	INLINE STEERING BLOCK, for Dynamic Strut Front End, use with #8443 axle.	pr	2.50
8443	ALUM. INLINE FRONT AXLE, w/set screws and axle nuts. Use with #8441 steering blocks. Requires the use of 4 3/16" x 5/16" flanged bearings for front wheels (#6902)	pr	6.00
6902	BALL BEARING, 3/16" x 5/16, flanged, use with	pr	15.00

	#8443 axles		
4116	SPRING, .024	pr	2.00
4117	SPRING, .022	pr	2.00
4113	SPRING, .020 (#4400, 4401 kit spring)	pr	2.00
4114	SPRING, .018	pr	2.00
4119	SPRING, .016 (silver)	pr	2.00
4118	SPRINGS, .014 (black)	pr	2.00
3760	DIRECT MOUNT SERVO SAVER, for JR, Airtronics, Sanwa servos	1	3.50
3761	DIRECT MOUNT SERVO SAVER, for splined shaft Futaba servos	1	3.50
8435	SERVO MOUNT WITH SCREWS	1	1.50
4448	ALUM. BALL END AND CUP	2ea	3.00
4449	4-40 ALUM. LOCKNUT, small pattern (gold anodized)	5	2.50
6274	BALL CUPS	14	5.00
6262	STEERING TURNBUCKLE, 1.65"	pr	3.00
8439	FLAT HEAD SCREW, 8-32 X 5/8"	4	1.50
3323	THICK ALUM. WASHER, #8, for ride height adjustment	12	1.50
4145	ALUM. SOCKET HEAD CAP SCREW, 4-40 x 5/16"	4	1.50
6292	FLAT HEAD SCREW, 4-40 x 3/8"	6	2.00
6299	E-CLIP	12	1.00
6919	BUTTON HEAD Socket Screw, 4-40 X 5/16	6	2.00
6936	ALUM. WASHER, #4	10	1.00

## STANDARD FRONT END



### FOR RC12LW, RC12L & CLUB RACER 12

3211	STEERING BLOCKS, RC12L	pr	2.00
3213	STUB AXLES WITH CLIPS	pr	2.50
3214	"E" CLIPS, 1/8"	10	1.00
3752	TIE ROD AND LINKAGE KIT	1	4.00
4115	SUSPENSION ARM for I.S. front end	pr	4.00
4116	SPRING, .024	pr	2.00
4117	SPRING, .022	pr	2.00
4113	SPRING, .020 (#4400, 4401 kit spring)	pr	2.00
4114	SPRING, .018	pr	2.00
4119	SPRING, .016 (silver)	pr	2.00
4118	SPRINGS, .014 (black)	pr	2.00
4127	SHIM SET, 0 and 2 degree	2pr	1.50
4187	FRONT AXLE SPACERS, 1/8" nylon	12	1.00
4328	FRONT END SCREW SET, 8/32	6	2.00
4430	FRONT END BRACE, FOR 12LW (fits only standard front end)	1	2.00

### FOR RC12i

4115	SUSPENSION ARM for I.S. front end	pr	4.00
4123	KINGPIN for I.S. front end only	pr	4.00

### STEERING SERVO SAVER



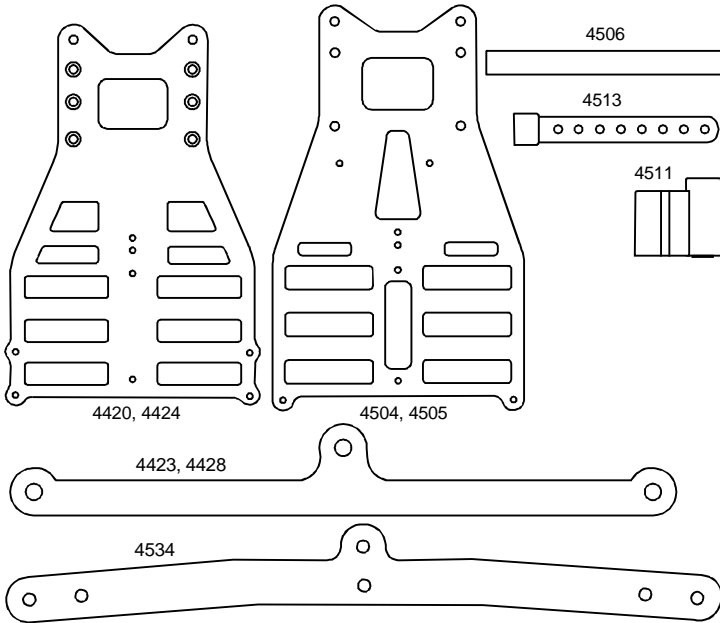
3758 (black)  
3760 (grey)  
3761 (white)



3760,  
3761

3758	DIRECT MOUNT SERVO SAVER, for Novak NES1A	1	3.50
3760	DIRECT MOUNT SERVO SAVER, for JR, Airtronics, Sanwa servos	1	3.50
3761	DIRECT MOUNT SERVO SAVER, for splined shaft Futaba servos	1	3.50

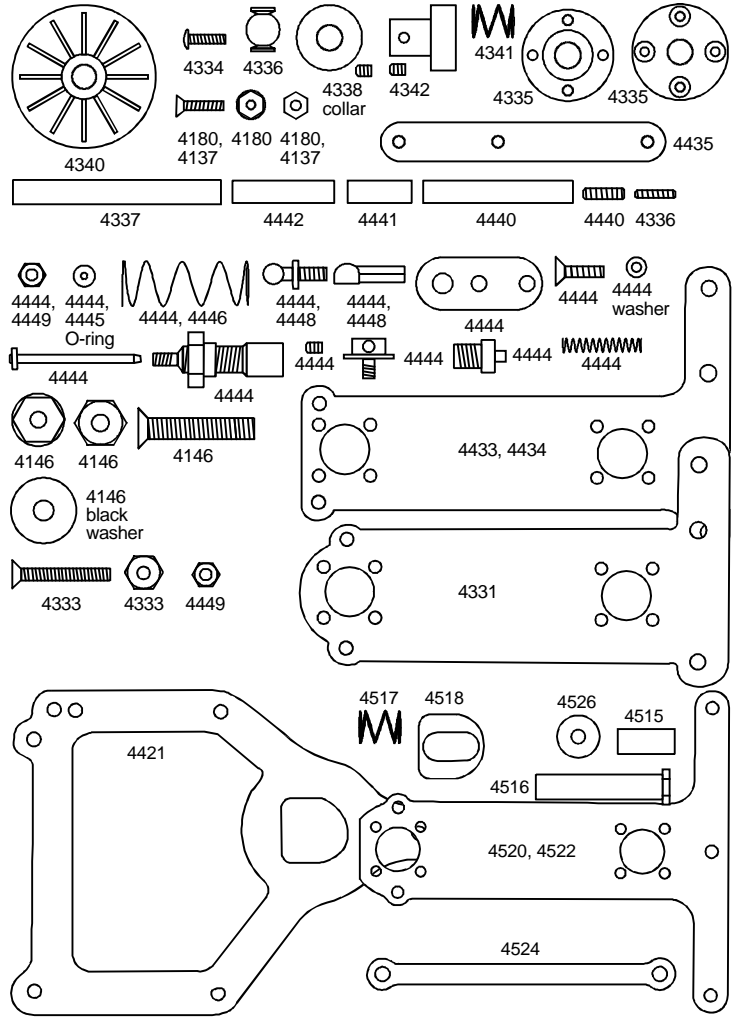
### CHASSIS PARTS & BODY MOUNTS



FOR RC12LC			
4504	12LC CHASSIS, .084" graphite	1	42.00
4505	12LC CHASSIS, .078" graphite, optional lightweight chassis	1	42.00
4506	FRONT SUSPENSION BRACE, Aluminum fits all RC12L series cars.	1	2.00
4510	ANTENNA ROD, FIBERGLASS, end cap	1	2.00
4511	12LC SHOCK/ANTENNA MOUNT, molded	1	1.50
4513	12LC REAR BODY MOUNT KIT	1	3.00
4534	12LC REAR CHASSIS BRACE, graphite	1	7.50
6330	BODY MOUNT KIT, with hardware	1	2.00

FOR RC12LS & RC12LW			
4420	CHASSIS, FIBERGLASS	1	16.00
4424	CHASSIS, GRAPHITE For 12LS/LW (replaces #4425 RC12LW graphite chassis to simplify installation of body mounts for #4400 & #4401 new front suspension kits.)	1	40.00
4428	12LW/LS REAR CHASSIS DAMPENER BRACE, GRAPHITE	1	5.00
4443	SHOCK/ANTENNA MOUNT	1	1.50

### T-BAR & DAMPENER PARTS



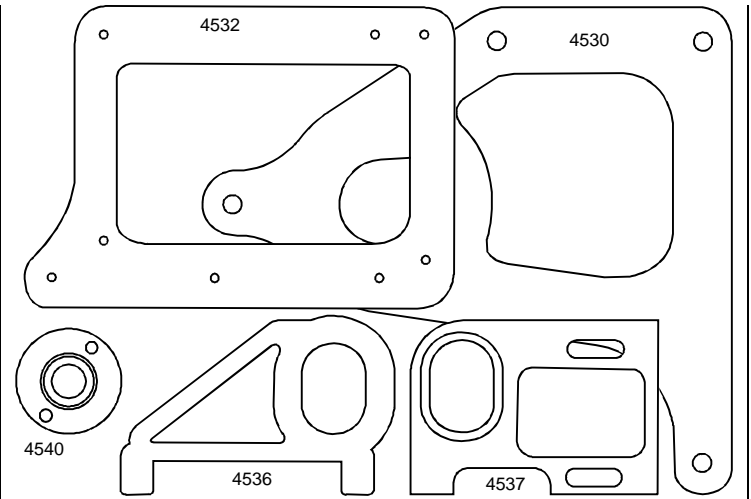
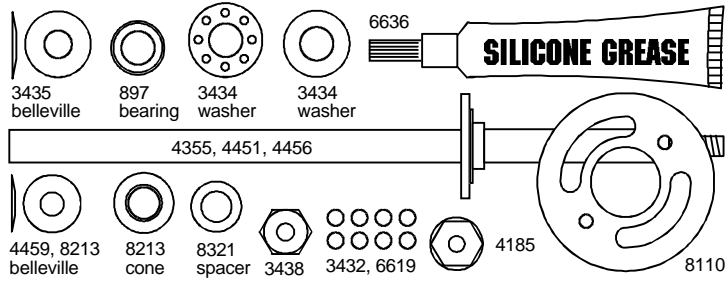
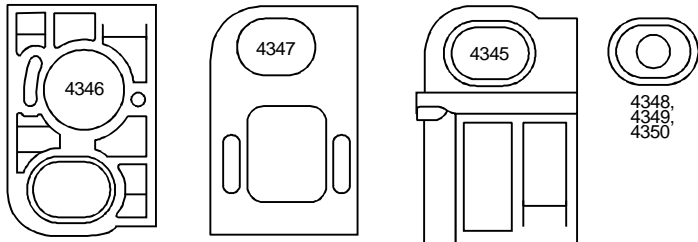
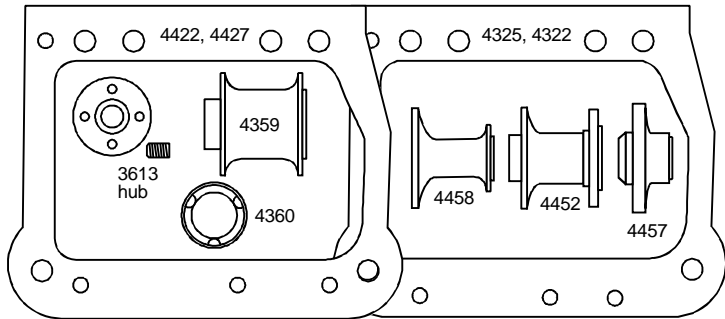
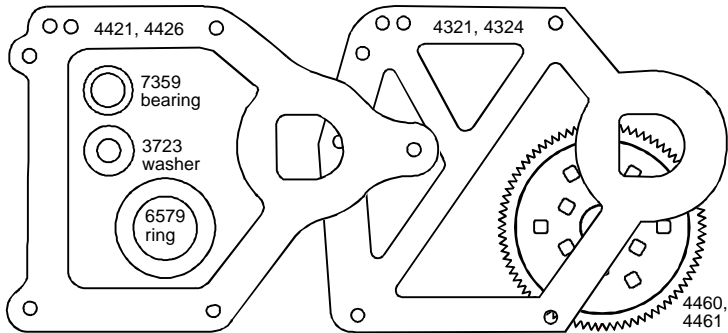
FOR RC12LC			
4520	12LC SYMMETRICAL T-BAR, .075" thick	1	5.00
4522	12LC SYMMETRICAL T-BAR, .063" thick	1	4.50
4524	T-BAR BRACE, graphite, fits all RC12L series cars	1	2.50
4526	T-BAR SPACERS, molded	3	1.50
4515	12LC DAMPENER CENTER POST, Aluminum	1	1.50
4516	12LC DAMPENER POST, Molded	1	1.50
4517	12LC DAMPENER SPRINGS	2	1.50
4518	DAMPENER ROLL STOPS, Molded inserts	2	1.50
4519	FLAT HEAD SOCKET SCREW, 4-40 x 9/16"	6	2.00

RC12LS, RC12LW, RC12L, CLUB RACER 12			
4333	T-BAR PIVOT BALL MOUNTING SCREWS & NUTS	2pr	.75
4334	PIVOT SOCKET SCREW, 2-56 x 5/16" button head socket screw	8	1.50
4335	PLASTIC T-BAR PIVOT SOCKET	set	1.50
4336	STEEL T-BAR PIVOT BALL	1	2.00
4338	ALUMINUM TUBE COLLAR, LOWER	1	1.50
4340	PLASTIC DAMPENER WASHER	2	1.00
4341	DAMPENER SPRING	2	1.00
4127	SHIM SET, 0 and 2 degree	2pr	1.50

FOR RC12LS & RC12LW ONLY			
4421	12LW/LS DAMPENER PLATE, FIBERGLASS	1	5.00
4433	T-BAR, .063	1	3.50
4434	T-BAR, .075	1	3.50
4435	T-BAR SPACER	1	2.00
4436	TWEAK SET SCREW, 4-40 X 5/16"	4	1.50
4440	DAMPENER POST	1	1.50
4441	DAMPENER STANDOFF	1	1.00
4442	CHASSIS/DAMPENER BRACE STANDOFF	1	1.50

Part #	Description	Qty	Price
4444	SHOCK KIT	1	18.00
4445	SHOCK, RED O-RING (for Delta shock)	4	2.00
4446	SHOCK SPRING	1	1.00
4448	ALUMINUM BALL ENDS AND CUPS	pr	3.00
4449	4-40 ALUM. LOCKNUT, small pattern (gold anodized)	5	2.50
<b>FOR RC12L &amp; CLUB RACER 12 ONLY</b>			
4331	T-BAR, .074	1	3.50
4337	ALUMINUM DAMPENER TUBE	1	1.00
4342	UPPER DAMPENER TUBE COLLAR	2	.75
4180	2-56 NUT & SCREW SET, two each of screws, nuts, nylon nuts	1	1.00

### REAR END PARTS



### FOR RC12LC

4530	12LC DAMPENER PLATE, graphite	1	10.00
4532	12LC/L3 LOWER REAR POD PLATE, graphite	1	10.00
4536	LEFT REAR BULKHEAD, molded, fits 1996 RC12L3/LC, RC10LS & RC10LSO	1	3.00
4537	MOTOR BULKHEAD, Aluminum, fits 1996 RC12LC, RC10LS & RC10LSO	1	20.00
4540	LEFT WHEEL HUB, Aluminum, will work as left wheel hub for all 12L series axles.	1	4.00

### RC12LS, RC12LW, RC12L, CLUB RACER 12

897	BALL BEARING, 1/4 X 3/8, flanged (for rear axle)	2	13.00
3432	DIFFERENTIAL BALL, 1/8"	16	1.50
3434	THRUST BALL BEARING set, 1/4" ID x 9/16" OD with thrust washers	1 set	2.50
3435	BELLEVILLE WASHER/SHIM set (for #3434 when used on dif)	1 set	.50
3613	LEFT WHEEL HUB with set screw. Left & right hubs for non-dif axle. (May also use one left hub for dif axle.)	2pr	5.00
4185	NYLON LOCKNUTS, 8-32	6	1.00
4345	LEFT HAND PLASTIC BULKHEAD	1	2.50
4346	RIGHT HAND PLASTIC BULKHEAD (will not fit RC12LW)	1	2.50
4347	RIGHT HAND ALUMINUM MOTOR BULKHEAD	1	20.00
4348	AXLE BEARING HEIGHT ADAPTER, #0	pr	1.00
4349	AXLE BEARING HEIGHT ADAPTER, #1	pr	1.00
4350	AXLE BEARING HEIGHT ADAPTER, #2	pr	1.00
4355	REAR AXLE, GRAPHITE	1	15.00
8209	REAR AXLE, fiberglass	1	14.00
4359	RIGHT REAR WHEEL/DIF SPACER	1	3.00
4360	BEARING MOUNT FOR #4359 SPACER	1	1.00
6619	CARBIDE DIF BALLS, 1/8"	8	8.00
6636	SILICONE DIF GREASE	1	2.50
8213	DIF THRUST CONE with Belleville washers (replaces #3434 & 3435 for dif)	set	2.00
8110	MOTOR SPACER	1	2.00
8321	REAR AXLE SPACERS (replaces #3434 thrust bearing for rear axle)	2	1.50

### RC12L & CLUB RACER 12 ONLY

4325	LOWER REAR BRACE, GRAPHITE	1	10.00
------	----------------------------	---	-------

### RC12LS, RC12LW ONLY

4421	UPPER REAR BRACKET, FIBERGLASS	1	5.00
4422	12LW/LS LOWER REAR POD PLATE, FIBERGLASS	1	6.00
4426	12LW/LS DAMPENER PLATE, GRAPHITE	1	10.00
4427	12LW/LS LOWER REAR PLATE, GRAPHITE	1	10.00

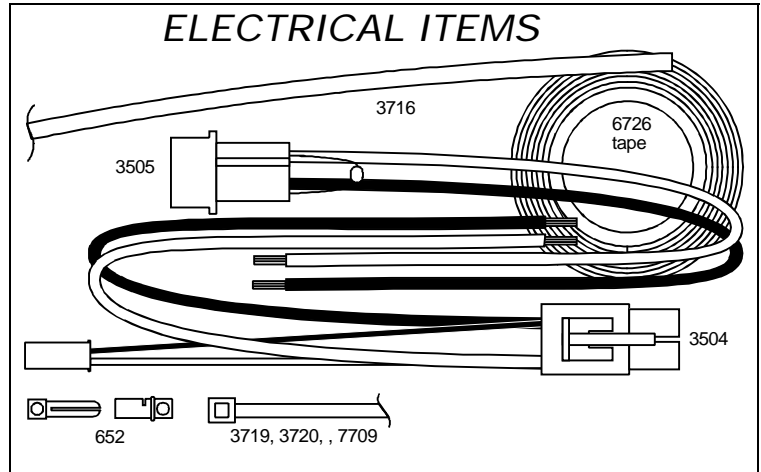
### RC12i & RC12E REAR END PARTS

2222	BALL BEARINGS, 1/4" ID x 5/8" OD	pr	12.50
3436	ALUMINUM LOCKNUT, 10-32	6	2.50



8285	87 TOOTH, 48 PITCH	1	4.00
<b>FRONT WHEELS AND ACCESSORIES</b>			
3649	DISHED FRONT WHEEL, WHITE, requires use of #3656 1/8" x 5/16" unflanged ball bearings	pr	3.50
3649B	DISHED FRONT WHEEL, BLACK, requires use of #3656 1/8" x 5/16" unflanged ball bearings	pr	3.50
3649Y	DISHED FRONT WHEEL, FLUORESCENT YELLOW, requires use of #3656 1/8" x 5/16" unflanged ball bearings	pr	3.50
3650	SPOKED FRONT WHEEL, WHITE, lightweight, uses standard #3655 1/8" x 5/16 flanged ball bearings	pr	3.50
3650B	SPOKED FRONT WHEEL, BLACK, uses standard #3655 1/8" x 5/16" flanged ball bearings	pr	3.50
3650Y	SPOKED FRONT WHEEL, FLUORESCENT YELLOW, uses standard #3655 1/8" x 5/16" flanged ball bearings	pr	3.50
3653	FRONT WHEEL BUSHING	pr	1.00
3655	BALL BEARING FOR FRONT WHEEL (two pr required). 1/8" ID x 5/16 " OD flanges	pr	12.00
3656	BALL BEARING 1/8" x 5/16" unflanged, fits new #3649 front wheel only	pr	10.00
<i>NOTE: Rubber is coded with colored paint</i>			
3667	FRONT DONUT, high traction for maximum steering, GREEN	pr	3.50
3669	FRONT WHEEL/TIRE, very high traction, mounted and trued, GREEN	pr	9.00
3670	YOKOMO FRONT TIRE DONUT	pr	8.50
3672	DISHED FRONT WHEEL/TIRE, mounted & trued firm (green compound)	pr	9.00
4187	1/8" FRONT AXLE SPACER, nylon	12	1.00

<b>REAR WHEELS AND ACCESSORIES</b>			
3609	DISHED REAR WHEEL, only fits S2 rear axle	pr	3.50
3609B	DISHED REAR WHEEL, BLACK, only fits S2 rear axle	pr	3.50
3609Y	DISHED REAR WHEEL, FLUORESCENT YELLOW, only fits S2 rear axle	pr	3.50
3610	SPOKED REAR WHEEL, fits standard dif and S1 dif only	pr	3.50
3610B	SPOKED REAR WHEEL, BLACK, fits standard dif and S1 dif only	pr	3.50
3610Y	SPOKED REAR WHEEL, FLUORESCENT YELLOW, fits standard dif and S1 dif only	pr	3.50
3615	ALLEN CAP SCREW, 5-40 x 5/8"	6	1.00
3616	ALLEN SET SCREW, 10-32 x 1/4" w/wrench	6	1.50
3618	REAR TIRE DONUT, high traction rubber, med. compound , YELLOW	pr	4.00
3619	REAR TIRE DONUT, high traction rubber, firm compound, GREEN	pr	4.00
3624	REAR WHEELS/TIRE, mounted/trued, medium, YELLOW	pr	9.50
3625	REAR WHEELS/TIRE, mounted/trued, firm, GREEN	pr	9.50
3626	DISHED REAR WHEEL/TIRE, mounted & trued, firm (green compound). Only fits S2 rear axle	pr	9.50
3630	YOKOMO REAR TIRE DONUT	pr	10.00



3504	MOTOR CONNECTOR, JST type	pr	1.00
3505	MOTOR CONNECTOR, AMPS type	pr	2.00
3507	CONNECTOR PIN, female	8	1.00
3508	CONNECTOR PIN, male	8	1.00
3711	THROTTLE CONTROL RESISTER, RC12i &12E	1	8.00
3712	THROTTLE CONTROL WIPER	1	1.50
3716	ANTENNA TUBE WITHOUT MOUNT	1	1.00
3719	NYLON TIES, 6", heavy duty for battery packs	12	2.00
7709	NYLON WIRE TIES, 4 inches each	12	1.25
3720	NYLON TIES, 8", light duty for receiver	12	2.00
3736	FAST-CHARGE CORD for 6-cell packs	1	5.50
3737	16 GAGE STRANDED, SUPERFLEX WIRE, high temperature silicon rubber insulation. Extremely high grade wire. Use for flexible connection to throttle control wiper, or for all wiring on car. 2 ft. orange, 2 ft. black	2	5.00
3740	BATTERY CONNECTOR, 3-pin mating pair	pr	2.50
652	BATTERY POWER CONNECTOR PINS. Eliminates hassle of soldering battery pack to radio leads. Quick connect/disconnect	5pr	10.00
3783	THROTTLE RESISTOR, ultra light, 8/10 ohm RC12i & 12E	1	10.00
6726	NEW IMPROVED SERVO TAPE, black roll, 36" length (replaces #4326)	1	2.50
4370	WIRING HARNESS	1	7.50

## REEDY MODIFIEDS PRODUCTS

### MOTORS

#### REEDY STOCK MOTORS

*Our latest generation stock motors offer laydown brushes and our updated 1.4mm thick can design. In addition the motor uses an entirely new magnet construction along with a new brush vibration dampening system. The plus versions are the same quality stock motors, but they come with our #768 brushes (FireHawk Plus) or #767 brushes (Conquest Plus), and #742 off road springs. They are also dyno tested and come with the dyno print out sheet that shows you the results of the dyno testing. Both versions of the Fire Hawk model are ROAR and NORRCA legal for racing.*

300	FIRE HAWK STOCK, 27 turn/ROAR specification	1	36.00
301	FIRE HAWK PLUS, dyno sheet included	1	40.00
302	CONQUEST 27 STOCK, 36°	1	36.00
303	CONQUEST PLUS, dyno sheet included	1	40.00
580	DS SPEC MOTOR, 23 turn, 0.8mm wire, 18° fixed timing, bushing, replaceable brushes. Standard, spec stock motor included in #8080 and 8081 DS kits.	1	30.00

<b>DS MODIFIED COMPETITION MOTORS</b>			
<i>Designed for Trans Am and touring car racing, each motor is hand wound, dynamically balanced, and assembled complete with adjustable timing and dual ball bearings.</i>			
586	DS "Z" 17 turn triple	1	55.00
587	DS "B" 15 turn triple	1	55.00
588	DS "A" 14 turn triple	1	55.00
589	DS "E" 13 turn triple	1	55.00
590	DS "H" 12 turn triple	1	55.00
591	DS "T" 11 turn triple	1	55.00
592	DS "Y" 10 turn triple	1	55.00

<b>REEDY TRI SONIC SERIES</b>			
<i>Reedy Has taken the design of the Ultra Sonic motor to a higher performance level. This standard upright brush motor uses the same improved can and magnet design as our new stock motors. It also uses the new brush dampening system that helps improve brush and commutator life. The upright brush design makes this a high RPM motor design.</i>			

310	TRI SONIC "S" on road, 12 double	1	90.00
311	TRI SONIC "I" on road, 12 turn quint	1	90.00
312	TRI SONIC "M" on road, 13 double	1	90.00
313	TRI SONIC "C" on road, 13 triple	1	90.00
314	TRI SONIC "D" on road, 14 quad	1	90.00
315	TRI SONIC "B" on road, 15 triple	1	90.00
316	TRI SONIC "V" on road, 16 quint	1	90.00
317	TRI SONIC "O" 11 turn double	1	90.00
318	TRI SONIC "P" 13 turn quint	1	90.00
319	TRI SONIC "A" 14 turn triple	1	90.00
320	TRI SONIC "F" 15 turn quint	1	90.00
321	TRI SONIC "X" 10 turn quad	1	90.00
323	TRI SONIC "?" 10 turn double	1	90.00
324	TRI SONIC "Y" 10 turn triple	1	90.00
326	TRI SONIC "93" 9 turn triple	1	90.00

<b>REEDY MODIFIED, SONIC SERIES MOTOR</b>			
<i>"Turbo Cooled" modified motors with "M" magnets. See Sonic portion of Motor Accessories section for springs and brushes.</i>			

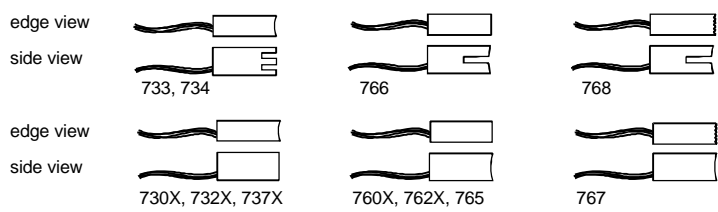
525	SONIC "A" 14 turn triple	1	85.00
529	SONIC "E" 13 turn triple	1	85.00
531	SONIC "G" 11 turn quad	1	85.00
533	SONIC "L" 14 turn double	1	85.00
534	SONIC "M" 13 turn double	1	85.00
535	SONIC "O" 11 turn double	1	85.00
538	SONIC "S" 12 turn double	1	85.00
539	SONIC "?" 10 turn double	1	85.00
541	SONIC "T" 11 turn triple.	1	85.00
542	SONIC "Y" 10 turn triple	1	85.00
544	SONIC "I" 12 turn quint	1	85.00
545	SONIC "W" 11 turn quint	1	85.00
546	SONIC "U" 10 turn quint	1	85.00
547	SONIC "X" 10 turn quad	1	85.00

<b>REEDY MODIFIED, SONIC2 SERIES</b>			
<i>The Sonic2 laydown brush modified motor updates the Sonic motor series by offering the same improvements we are using on the new stock and Tri Sonic modified motors. The large commutator and laydown brushes make this a great high load or torque application motor with only slightly less RPM than the Tri Sonic motor series.</i>			
350	SONIC 2 "S" 12 turn double	1	90.00
351	SONIC 2 "O" 11 turn double	1	90.00
352	SONIC 2 "?" 10 turn double	1	90.00
354	SONIC 2 "T" 11 turn triple	1	90.00
355	SONIC 2 "X" 10 turn quad	1	90.00
356	SONIC 2 "W" 11 turn quint	1	90.00

357	SONIC 2 "J" 12 turn quad	1	90.00
358	SONIC 2 "M" 13 turn double	1	90.00
364	SONIC 2 "92" 9 turn double	1	90.00
<b>REEDY MODIFIED, ULTRA SONIC SERIES MOTOR</b>			
560	ULTRA SONIC "S" 12 turn double	1	85.00
561	ULTRA SONIC "I" 12 turn quint	1	85.00
562	ULTRA SONIC "W" 11 turn quint	1	85.00
564	ULTRA SONIC "C" 13 turn quad	1	85.00
565	ULTRA SONIC "M" 13 turn double	1	85.00
566	ULTRA SONIC "P" 13 turn quint	1	85.00
567	ULTRA SONIC "L" 14 turn double	1	85.00
568	ULTRA SONIC "D" 14 turn quad	1	85.00
569	ULTRA SONIC "F" 15 turn quad	1	85.00
570	ULTRA SONIC "V" 16 turn quad	1	85.00

## MOTOR ACCESSORIES

<b>FOR ALL MOTORS</b>			
SP-300	REEDY COMM LATHE, commutator truing lathe for modified motors only	1	250.00 **
SP-301	CARBIDE INSERT, replacement cutter tip for motor truing lathe tool	1	20.00 **
SP-302	LATHE BATTERY PACK, 5 cell (6 volt) for use as a lathe power source	1	20.00 **
6515	MOTOR MOUNTING Screw, 3mm metric	4	1.00
6520	CAPACITOR, noise suppression, 0.10 uf.	2	2.00
745	SCHOTTKY DIODE, special diode for motors & high frequency speed controls. Brakes run cooler and work more effectively. Helps improve battery regeneration.	2	5.25



<b>MODIFIED MOTOR BRUSHES AND SPRINGS for standard commutator motors</b>			
730X	NEW & IMPROVED PERFORMANCE BRUSH. Low resistance, long comm. life	pr	3.00
732X	NEW & IMPROVED 1:12 AND 1:10 ON ROAD BRUSH. Competition on road brush only. Short brush and comm life.	pr	3.00
737X	NEW STANDARD 1:10 OFF ROAD BRUSH. Used in assembly of all upright brush modified motors.	pr	3.00
733	STANDARD ON ROAD CLIPPER BRUSH, with slotted adjustable contact area. Allows brushes to be tuned for motor and track. Standard brush, on road and stock motor compound	pr	4.50
734	STANDARD OFF ROAD CLIPPER BRUSH, with slotted adjustable contact area. Allows brushes to be tuned for motor and track. Standard brush, off road compound	pr	4.50
740	COPPER HEAD SPRING, for off road racing	pr	2.50
741	COPPER HEAD SPRING, on road, low resistance, high temperature.	pr	2.50

<b>STOCK MOTOR BRUSHES AND SPRINGS for large commutator motors</b>			
742	SONIC MOTOR SPRING, High tension copper clad mat'l. Off road and on road uses.	pr	3.00
760X	NEW LAYDOWN 1:10 OFF ROAD BRUSH, same compound as the #737X brush. Low resistance, long comm life.	pr	3.00

762X	NEW LAYDOWN PERFORMANCE BRUSH. Same compound as 730X brush. Low resistance, long comm. life.	pr	3.00
767	SERRATED BRUSH, contoured performance brush for laydown stock motor	pr.	3.00
768	SERRATED BRUSH, contoured performance brush with single vertical cut for laydown stock motor.	pr	3.50

## MOTOR PARTS

### ARMATURES

*Small com, tapered shank, hand wound, epoxy dipped and zero gravity baked for precise balancing. Armature cut to perfection, epoxy balanced, then drill balanced for the final touch.*

450	SMALL COM ARMATURE 11 turn double	1	35.00
451	SMALL COM ARMATURE 11 turn triple	1	35.00
452	SMALL COM ARMATURE 12 turn double	1	35.00
453	SMALL COM ARMATURE 12 turn quint	1	35.00
454	SMALL COM ARMATURE 13 turn double	1	35.00
455	SMALL COM ARMATURE 13 turn quint	1	35.00
456	SMALL COM ARMATURE 14 turn triple	1	35.00
457	SMALL COM ARMATURE 14 turn quint	1	35.00
458	SMALL COM ARMATURE 15 turn triple	1	35.00
459	SMALL COM ARMATURE 16 turn triple	1	35.00

*Large com, cooling fans for heavy loads, tapered shank, hand wound, epoxy dipped and zero gravity baked for precise balancing. Armature com cut to perfection, epoxy balanced, then drill balanced for the final touch.*

470	LARGE COM ARMATURE 10 turn double	1	35.00
471	LARGE COM ARMATURE 10 turn quad	1	35.00
472	LARGE COM ARMATURE 11 turn double	1	35.00
473	LARGE COM ARMATURE 11 turn quad	1	35.00
474	LARGE COM ARMATURE 12 turn double	1	35.00
475	LARGE COM ARMATURE 12 turn quint	1	35.00

### OTHER MOTOR PARTS

440	MOTOR BALL BEARINGS, replacement modified motor ball bearings, 1/8" I.D. x 3/8" O.D. unflanged.	pr	15.00
442	MODIFIED MOTOR END BELL. For standard commutator. Upright brush style. With ball bearing installed	1	24.00
443	MODIFIED MOTOR END BELL. For large commutator. Laydown brush style. With ball bearing installed.	1	24.00
445	MODIFIED MOTOR CAN. Replace worn out and demagnetized cans for new ones. Yokomo can with 4.9 magnets and ball bearing installed.	1	24.00
446	SHIM KIT, fifteen precision shims for spacing armatures. Five each of .010", .005", & .003" sizes. Comes with instructions. Will also fit any 1/8" shaft or pin for removing excess end play.	15	2.50

## REEDY NI-CAD BATTERIES



### REEDY ZAPPERS BATTERIES

*REEDY ZAPPERS BATTERIES with NEW Voltage Maximizing Technology jointly developed and used exclusively by Reedy Modifieds and Team Orion*

640	REEDY NOVA ZAPPERS, unmatched & unassembled 6-cell. Each cell goes through special high voltage treatment process, giving you high voltage cells in a sport pack.	6	65.00
642	REEDY ZAPPERS, cycled & matched, unassembled 6-cell with high voltage processing. Recommended for stock class racing and four minute off road racing.	6	90.00
643	REEDY ZAPPERS, cycled & matched unassembled 7-cell with high voltage processing.	7	105.00
644	REEDY WC ZAPPERS, cycled & matched premium unassembled 6-cell w/high voltage processing. Recommended for on road, oval and truck competition.	6	120.00
645	REEDY NOVA-ZAPPERS 2000, unmatched, but have high voltage. Unassembled. Great for all-around racing.	6	75.00
646	REEDY ZAPPERS 2000, Incorporates the Sanyo RC2000 batteries and VMT. Unassembled. Recommended for off road racing and stock class racing.	6	90.00
647	REEDY WC ZAPPERS 2000, the top percentage of cells cycled, voltage processed, and matched. Unassembled. Recommended for on road racing and 6 cell truck racing.	6	110.00

### NOVA SERIES 1700 mAH SCRC

636	NOVA, 6 cell matched unassembled pack, 1700 mAH SCRC-SP cells, for off road or club level on road.	6	61.50
637	NOVA 7 cell matched unassembled pack, 1700 mAH SCRC-SP cells, for off road or club level on road.	7	71.75
650	BATTERY STRAP BRAID	6	1.50
651	REEDY BATTERY BARS, silver treated battery bars, for assembling individual cells into packs	6	4.00
652	BATTERY POWER CONNECTOR PIN. Eliminates hassle of soldering battery packs to radio leads. Quick connect/disconnect.	5pr	10.00

## BATTERY ACCESSORIES

650	BATTERY BRAID STRIPS	6	1.50
651	REEDY BATTERY BARS, silver treated battery bars for assembling individual cells into packs. Low electrical resistance for more power. Higher strength reinforces construction of your pack. Soldering is easier.	6	4.00
652	BATTERY POWER CONNECTOR PINS. Eliminates hassle of soldering battery pack to radio leads. Quick connect/disconnect	5pr	10.00

## REEDY T-SHIRT

*See Associated's Pictorial Catalog for full-color pictures of all items below*

SP-37	REEDY FIRE HAWK T-SHIRT. Fluorescent orange "Fire Hawk" and white Reedy logo on black T-shirt. Printed both sides. Specify XL only	1	11.00*
SP-37 XXL	REEDY FIRE HAWK T-SHIRT. Fluorescent orange "Fire Hawk" and white Reedy logo on black T-shirt. Printed both sides. Specify XXL only	1	13.00*

## REEDY BODY ACCESSORIES

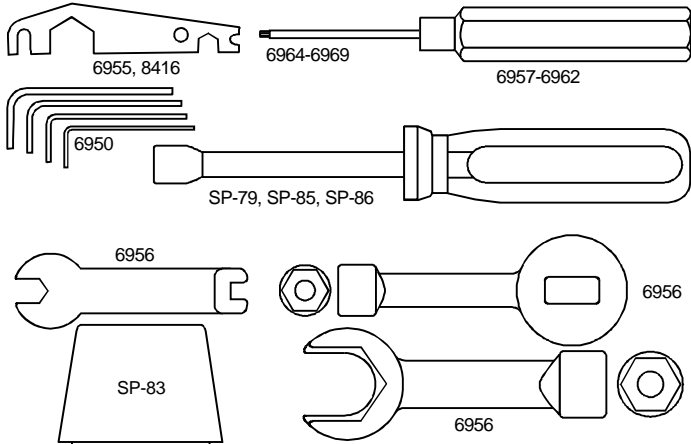
711	REEDY CAR WASH. Great for cleaning gas and electric cars and bodies. Lexan safe and biodegradable. Not for electrical components. 4 oz. bottles sold in cases of 12 only. Price reflects \$6.00	12	72.00
-----	---	----	-------



	per bottle. (Purchase individual bottles at your hobby shop or race track.)						
717	REEDY MODIFIED DECALS, 1995 style Reedy Logo, 3 sizes in both black and white (5.5" x 8.5" sheet)	1	2.50				
718	REEDY MODIFIED DECALS, 1995 style Reedy Logo, 3 sizes in both fluorescent red and green (5.5" x 8.5" sheet)	1	3.50				

## TOOLS

### TOOLS



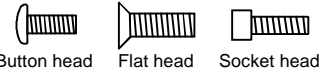
SP-79	HUNTER 3/8" NUT DRIVER, fits differential adjustment nut	1	7.50*
SP-83	KIMBROUGH PRODUCTS TIRE HORN	1	2.50*
SP-85	1/4" NUT DRIVER	1	7.50*
SP-86	3/16" NUT DRIVER	1	7.50*
6950	ALLEN WRENCH set, 3/32", 5/64, 1/16, .050	4	2.50
6951	PINION SET SCREWS with wrench	6	2.50
6955	SHOCK/TURNBUCKLE WRENCH, original Associated tool (silver colored)	1	2.50
6956	ASSOCIATED MOLDED TOOL SET Wrenches to install 11/32", 1/4" and 3/16" nuts. Adjusts 1/8" and 3/16" turnbuckles and installs and removes Associated shock caps	set	2.50
6957	.050" ALLEN DRIVER, precision ground replaceable tip, alum. hex handle (clear anodized)	1	10.50
6958	1/16" ALLEN DRIVER, precision ground replaceable tip, alum. hex handle (black anodized)	1	10.50
6959	5/32" ALLEN DRIVER, precision ground replaceable tip, alum. hex handle (blue anodized)	1	10.50
6960	3/32" ALLEN DRIVER, precision ground replaceable tip, alum. hex handle (gold anodized)	1	10.50
6961	2.5mm ALLEN DRIVER, precision ground replaceable tip, alum. hex handle (green anodized)	1	10.50
6962	1.5mm ALLEN DRIVER, precision ground replaceable tip, alum. hex handle (purple anodized)	1	10.50
6964	.050 REPLACEMENT TIP, precision ground	1	5.50
6965	1/16" REPLACEMENT TIP, precision ground	1	5.50
6966	5/64" REPLACEMENT TIP, precision ground	1	5.50
6967	3/32" REPLACEMENT TIP, precision ground	1	5.50
6968	2.5mm REPLACEMENT TIP, precision ground	1	5.50
6969	1.5mm REPLACEMENT TIP, precision ground	1	5.50
8416	SHOCK/TURNBUCKLE WRENCH, new Associated tool, fits Dynamic Strut Front End (gold colored)	1	2.50

## MISCELLANEOUS HARDWARE

2207	HOOD PINS, SMALL	6	.75
2208	HOOD PINS, LARGE	6	.75
3320	FRONT BODY MOUNTS with hardware	pr	1.50

3321	FRONT BODY MOUNT SPACERS with hardware	pr	2.00
6951	SET SCREWS 4-40 x 1/8" with .050 Allen wrench	6	2.50

### SCREWS



3324	ALUM. FLATHEAD SCREW, 8-32 x 1/2"	16	2.00
3325	ALUM. FLATHEAD SCREW, 8-32 x 1 1/2"	6	1.50
4145	ALUM. SOCKET HEAD cap screw, 4-40 x 5/16"	4	1.50
4180	2-56 SCREW & NUT SET, 2 each of screws, nuts, nylon nuts,	set	1.00
4181	ALUM. FLAT HEAD SCREW, 8-32 x 7/8"	6	2.00
4183	ALUM. ROUND HEAD SCREW, 8-32 x 1/2"	6	1.00
4179	LIGHTWEIGHT SCREW SET, aluminum, blue anodized	26	7.00
4334	BUTTON HEAD SOCKET screw, 2-56 x 5/16	8	1.50
6284	ALUM. SOCKET HEAD cap screw, 4-40 x 1/4"	12	4.00
6291	FLAT HEAD SS, 4-40 x 1/4"	6	2.00
6292	FLAT HEAD SS, 4-40 x 3/8"	6	2.00
6285	SOCKET HEAD CAP screw, 4-40 x 1/4"	6	2.00
6860	ALUM. SOCKET HEAD cap screw, 4-40 x 3/8"	6	2.00
6917	BUTTON HEAD socket screw 4-40 x 3/8"	6	2.00
6918	BUTTON HEAD SOCKET screw, 4-40 x 1/2"	6	2.00
6919	BUTTON HEAD SOCKET screw, 4-40 x 5/16	6	2.00
6920	BUTTON HEAD SOCKET screw, 4-40 x 3/16	6	2.00
6922	FLAT HEAD SS, 4-40 x 1/2"	6	2.00
6923	FLAT HEAD SS, 4-40 x 3/4"	6	2.00
6924	SOCKET HEAD CAP screw, 4-40 x 3/8"	6	2.00
6925	SOCKET HEAD CAP screw, 4-40 x 1/2"	6	2.00
6926	SOCKET HEAD CAP screw, 4-40 x 5/8"	6	2.00
6927	SOCKET HEAD CAP screw, 4-40 x 3/4"	6	2.00
6928	SOCKET HEAD CAP screw, 4-40 x 1"	6	2.00
6929	SOCKET HEAD CAP screw, 4-40 x 3/8"	6	2.50
6932	SOCKET HEAD CAP screw, 4-40 x 5/16"	6	2.00
6933	ALUM. FLAT HEAD SOCKET CAP screw, 4-40 x 5/16"	6	2.00
6934	ALUM. FLAT HEAD SOCKET CAP screw, 4-40 x 3/8"	6	2.00
6935	ALUM. SOCKET HEAD cap screw, 4-40 x 1"	4	2.00
6938	ALUM. FLAT HEAD SOCKET screw, 4-40 x 1/2"	6	2.00
6939	ALUM. FLAT HEAD socket screw, 4-40 x 1/4"	6	2.00
7658	FLAT HEAD machine screw, 8-32 x 3/8" (black)	6	2.00
7801	ALUM. SOCKET HEAD cap screw, 4-40 x 5/8"	8	2.50
7873	ALUM. SOCKET HEAD cap screw, 4-40 x 7/16"	8	2.50
7874	SOCKET HEAD cap screw 4-40 x 7/16"	8	2.50

### NUTS

3438	ALUMINUM LOCKNUT, 8-32	3	1.50
4180	2-56 NUT & SCREW SET, 2 each of screws, nuts, nylon nuts,	set	1.00
4184	NYLON LOCKNUT, 4-40	6	1.00
4185	NYLON LOCKNUT, 8-32	6	1.00
4186	NYLON LOCKNUT, 10-32	6	1.00
4449	4-40 ALUM. LOCKNUT, small pattern (gold anodized)	5	2.50
6296	8-32 LOCKNUT, 6 aluminum & 6 nylon.	12	3.00
6937	ALUMINUM LOCKNUT, #4	6	3.00
7260	THIN SMALL PATTERN PLAIN NUT, 4-40	12	2.00

### WASHERS

3216	AXLE WASHER, 1/8" ID	12	1.00
3323	THICK ALUM. WASHER, #8, for body mount spacers	12	1.50
3327	CHASSIS SHIM/TWEAK WASHER	12	1.00
4187	NYLON FRONT AXLE WASHER	12	1.00
4188	MOTOR MOUNT WASHER	12	1.50
6936	ALUMINUM FLAT WASHER, #4	10	1.00

## MISCELLANEOUS

See Associated's Pictorial Catalog for full-color pictures of all items below

### CAR CARRIER EQUIPMENT

SP-100	ASSOCIATED CAR CARRIER BOX, cardboard outer box w/locking end flap, unassembled. Includes three 24 x 12 x 6" inner boxes, unassembled (fits inside new #SP-415 carrier bag)	1	15.00 **
SP-101	INNER BOXES, 24 x 12 x 6", unassembled. Replacement cardboard inner boxes for car carrier box #SP-100	3	5.25**
SP-415	ASSOCIATED CAR CARRIER BAG, black nylon with brass zipper (fits over #SP-100 car carrier box)	1	39.95 **

### WEARABLES

SP-37	REEDY FIRE HAWK T-SHIRT, Fluorescent orange "Fire Hawk" and white Reedy logo on black T-shirt. Printed on both sides. Specify M, L, & XL.	1	11.00*
SP-37 XXL	REEDY FIRE HAWK T-SHIRT, Fluorescent orange "Fire Hawk" and white Reedy logo on black T-shirt. Printed on both sides. Specify XXL only.	1	13.00*
SP-40	RC10DS T-SHIRT. Full color RC10DS cars with 2 TransAm and 2 DTM bodies. Same design both sides. Specify sizes M, L, XL	1	13.00*
SP-40 XXL	RC10DS T-SHIRT. Full color RC10DS cars with 2 TransAm and 2 DTM bodies. Same design both sides. XXL size only	1	15.00*
SP-41	ASSOCIATED B3 '97 WORLDS T-SHIRT. Full color front and back. Designs different on front and back. Specify M, L, XL	1	13.00*
SP-41 XXL	ASSOCIATED B3 '97 WORLDS T-SHIRT. Full color front and back. Designs different on front and back. XXL size only	1	15.00*
SP-410	TEAM ASSOCIATED JACKET, red, white & blue. Fully lined. Specify M,L,XL, XXL, XXXL	1	59.95 **

### VIDEOS

6977	VHS VIDEO, "R/C CAR RACING '95". Featuring highlights from 1995's most exciting races from around the world!	1	19.95
6978	VHS VIDEO, "R/C CAR RACING '96." Highlights from some of 1996's greatest races!	1	19.95
6978P	PAL VIDEO, "R/C CAR RACING '96." International PAL format. Highlights from some of 1996's greatest races!	1	19.95
6979	VHS VIDEO, "R/C CAR RACING '97." Highlights from some of 1997's greatest races!	1	19.95
6979P	PAL VIDEO, "R/C CAR RACING '97." International PAL format. Highlights from some of 1997's greatest races!	1	19.95