

part #	description	qty	price	part #	description	qty	price
--------	-------------	-----	-------	--------	-------------	-----	-------

1:10 RC10L2 ON ROAD CATALOG

CATALOG #10L2 October 1997

This free catalog is updated yearly; is yours current?

Prices subject to change without notice.

If you cannot obtain parts from your distributor or dealer, you may order them directly from us.

(We're sorry, you cannot order car kits from us.)

For up-to-date news and online help, visit

<http://www.rc10.com>

ORDERING INSTRUCTIONS

Write out order on separate sheet of paper if Order Form is missing. Include part no., quantity, and price of each item. **Include your phone no., full name and return address. DO NOT SEND CASH.**

2. California residents only add sales tax: 7.75% in Orange County, 6.25% elsewhere.

3. Add shipping fee of \$4.25 to all orders, except for faster Red, Orange & Blue Label services and international orders, which require extra charges.

4. C.O.D. fee is \$4.75 (C.O.D. = "Collect On Delivery")

5. All international orders must be prepaid by International Money Order in US funds.

6. Mail order to: **Associated Electrics, Inc.**

3585 Cadillac Ave.

Costa Mesa, CA 92626 USA

7. Or call (714) 850-9342. **Please have your order ready before calling.** Or FAX: 714-850-1744. **Include your phone no., full name and return address.**

RC10L2 COMPETITION KITS

8015	RC10L2 ON ROAD KIT. Complete graphite chassis kit with bearings. Does NOT include body, motor, battery, battery charger, radio system, or electronic speed control.	1	260.00
8016	RC10L2O OVAL KIT. Complete graphite chassis kit with bearings. Does NOT include body, motor, battery, battery charger, radio system, or electronic speed control.	1	260.00

LRP ELECTRONIC SPEED CONTROLS

Associated is the exclusive importer for North and South America of the LRP digital electronic speed control. It uses a miniature digital computer that results in a state-of-the-art speed control that surpasses every other type available.

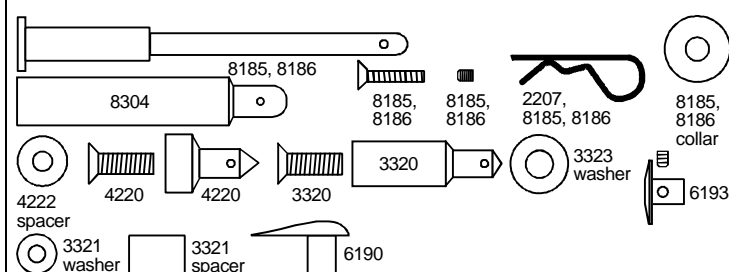
LRP 8067	LRP IPC DIGITAL ELECTRONIC SPEED CONTROL, winning speed control for both 2WD & 4WD at the 1995 IFMAR 1:10 Off Road World Championships, and 1996 IFMAR 1:10 On Road World Championships.	1	239.50
LRP 8304	LRP RUNNER electronic speed control, forward, reverse, EMK brake, w/thermal protection. Recommended motor: 20 turn or higher wind motor	1	79.95
LRP 8317	F1 DIGITAL electronic speed control, forward, reverse, EMK brake, w/ thermal protection. Recommended motor: 16 turn or higher wind motor.	1	99.50
LRP 8322	F1 POWER DIGITAL electronic speed control, forward, reverse, EMK brake, with thermal protection and adj. current limiter. Recommended motor: 12 turn or higher wind motor.	1	132.00
LRP	F1 BULLET DIGITAL electronic speed control,	1	175.00

8335	forward reverse, EMK brake, with thermal protection and adj. current limiter. Recommended motor: No Limit.		
LRP 8341	SPRINTER electronic speed control, forward, EMK brake, with adjustable current limiter & thermal protection. Recommended motor: stock motor.	1	79.95
LRP 8346	INDY 200 DIGITAL electronic speed control, forward, EMK brake, with adjustable current limiter & thermal protection. Recommended motor: 13 turn or higher wind motor.	1	99.50
LRP 8357	INDY 400 DIGITAL electronic speed control, forward, EMK brake, with adjustable current limiter & thermal protection. Recommended motor: 11 turn or higher wind motor.	1	132.00
LRP 8361	INDY 600 DIGITAL electronic speed control, forward, EMK brake, with adjustable current limiter & thermal protection. Recommended motor: no motor limit.	1	164.00

CLEAR BODIES & ACCESSORIES

6126	INT GTP	1	18.00
6167	LOLA T160, Can Am	1	18.00
6178	TOJ CAN AM	1	18.00

BODY ACCESSORIES



6180	DRIVER, clear	1	2.00
6181	HIGH DOWN FORCE WING KIT, includes #6182 wing, #6190 wing mounts and wire	1	3.50
6182	HIGH DOWN FORCE WING, 5 1/2"	1	2.00
6183	HIGH DOWN FORCE WING, 7"	1	2.00
8101	GTP RACING WING, 7"	1	2.00
8102	GTP RACING WING, 8 1/2"	1	2.00
6190	WING MOUNTS, adjustable (Wing-Things)	pr	1.75
6193	ALUMINUM WING MOUNTS. Fits .065" and .078" wire	pr	3.50
2207	BODY MOUNT HOOD PINS, small	6	.75
3320	FRONT BODY MOUNTS, long, with hardware	pr	1.50
4220	FRONT BODY MOUNTS, short	pr	1.50

(*) denotes non-standard discount item. (**) denotes short discount or net item.

ASSOCIATED ELECTRICS RC10L CATALOG

part #	description	qty	price	part #	description	qty	price
3321	FRONT BODY MOUNT SPACERS, 5/8"	pr	2.00	8441	ON CENTER STEERING BLOCK (use with #8443)	pr	2.50
4222	FRONT BODY MOUNT SPACERS, 3/16"	pr	1.00	8443	ON CENTER FRONT AXLES aluminum (5-50 thread), with set screws and nuts (use with #8441). Requires #6902 ball bearings & #6222 nylon axle nut.	pr	6.00
3323	#8 THICK ALUM. WASHERS, for body mount spacers	12	1.50	8445	RC10L SERVO SAVER, replaces #5551	1	6.60
8185	REAR BODY MOUNT, 3"	pr	3.50	6902	3/16 X 5/16" BALL BEARING, flanged (use with #8443)	2	15.00
8186	REAR BODY MOUNT, 5"	pr	3.50	8439	8-32 X 5/8 FLAT HEAD SCREW	4	1.50
8304	SS FRONT BODY MOUNTS	2	1.50	3324	8-32 X 1/2 ALUM. SCREW	16	2.00
9453	NEW! B3/B2 WING KIT, includes #6182 wing, #6190 wing mounts, and #9454 pre-bent wing wire	1	5.00	4145	4-40 X 5/16" ALUM. SOCKET HEAD CAP SCREW	4	1.50
9454	NEW! WING WIRE, .065" pre-bent	1	2.50	6292	4-40 x 3/8 FLAT HEAD SCREW	6	2.00
9555	NEW! WING WIRE, .078" pre-bent	1	2.50	6299	E-CLIP	12	1.00

DECALS

See Associated's Supplementary Catalog for full-color pictures of the following decals

2812	LARGE TEAM ASSOCIATED DECAL, black	5	2.50
2813	LARGE TEAM ASSOCIATED DECAL, white	5	2.50
3809	"RC12L" DECALS, 3 sizes, florescent red & yellow	1	2.00
3817	ASSOCIATED BUMPER STICKERS, 1 large, 1 small. Red, white, blue.	1	4.00
3818	TEAM ASSOCIATED LOGO DECALS, Mylar peel and stick, black	6	1.00
3819	TEAM ASSOCIATED LOGO DECALS, Mylar peel and stick, white	6	1.00
6196	TEAM ASSOCIATED & MISC. SPONSORS decals, 5 colors	1	2.00

WHEEL DOTS. Reusable coated Mylar Wheel Dots for your buggy and truck wheels. 2.31" dia., 4 dots per package

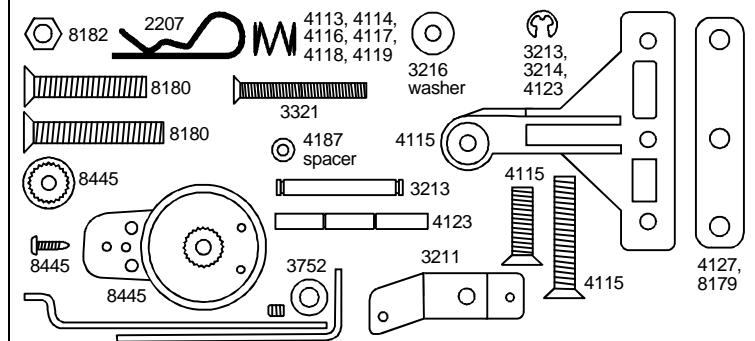
6855	WHEEL DOTS, fluorescent pink	4	2.00
6856	WHEEL DOTS, fluorescent red	4	2.00
6857	WHEEL DOTS, fluorescent green	4	2.00
6858	WHEEL DOTS, fluorescent yellow	4	2.00

DYNAMIC STRUT FRONT SUSPENSION

8400	RC10L DYNAMIC STRUT FRONT SUSPENSION KIT, will fit all RC10L series cars	1	39.00
8405	UPPER SUSPENSION ARMS	pr	3.00
8407	UPPER SUSPENSION ARM MOUNTS	4	3.50
8409	UPPER SUSPENSION ARM SCREW, 4-40 X 1/2" Flat Head Shoulder Screw	4	1.50
8411	UPPER SUSPENSION ARM EYELET	pr	1.50
8413	UPPER SUSPENSION ARM HINGE PIN, with caster shims	pr	2.00
8415	UPPER SUSPENSION ARM TURNBUCKLES	pr	2.00
8416	SHOCK/TURNUCKLE WRENCH, new Associated tool, fits Dynamic Strut Front End (gold colored)	1	2.50
8417	UPPER & LOWER SUSPENSION ARM PIVOT BALL	4	6.00
8419	LOWER SUSPENSION ARM	pr	3.50
8421	OFFSET STEERING BLOCK	pr	2.00
3213	STUB AXLE	pr	2.50
8423	KINGPIN	pr	4.00
8425	KINGPIN SHIM	10	1.50
8427	SPRING, .018	pr	2.00
8429	SPRING, .020 (RC10L2/L2O kit spring)	pr	2.00
8431	SPRING, .022 (#8400, RC10LS/LSO kit spring)	pr	2.00
8433	SPRING, .024	pr	2.00

8435	SERVO MOUNT WITH SCREWS	1	1.50
4448	ALUM. BALL END AND CUP	2ea	3.00
4449	4-40 LOCKNUT. Gold anodized, small pattern.	5	2.50
6274	BALL CUPS	14	5.00
8437	STEERING TURNUCKLE (RC10L/LS/L2)	pr	3.00
8438	STEERING TURNUCKLE (RC10LSS/LSO/L2O)	pr	3.00

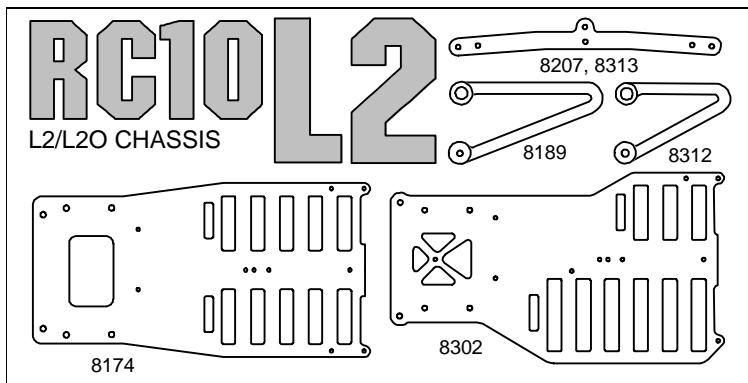
ORIGINAL FRONT END PARTS



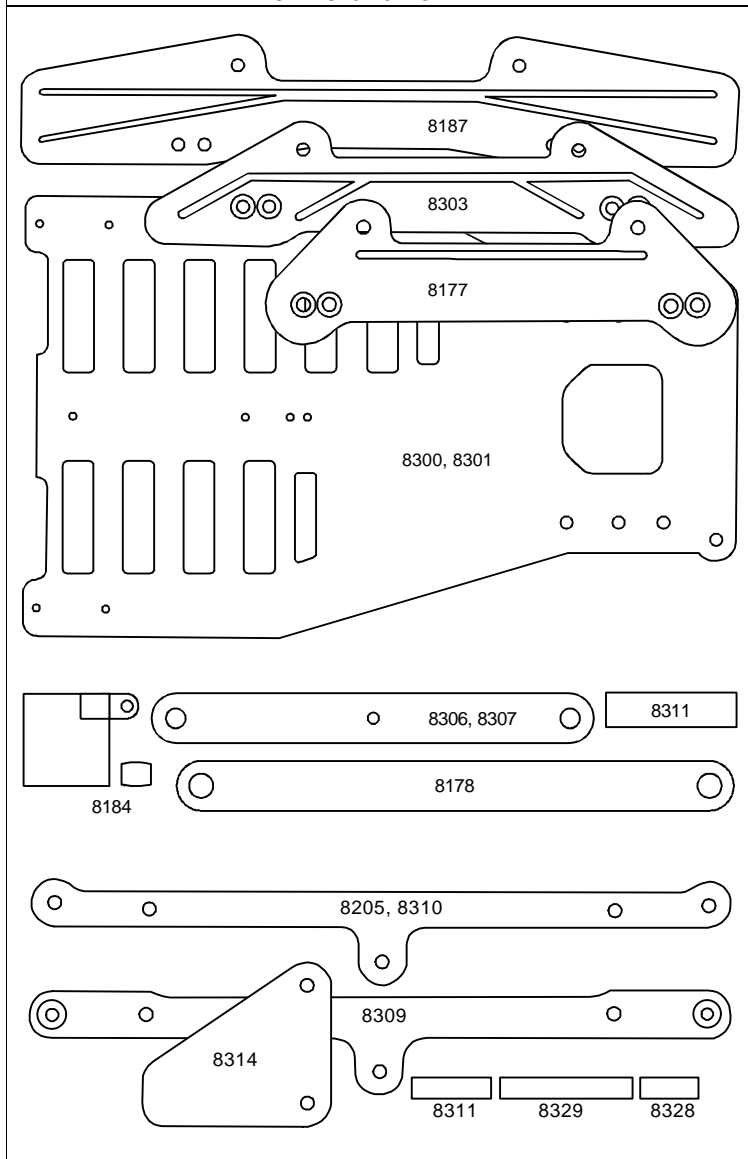
8111	STANDARD FRONT SUSPENSION KIT, contains suspension arms & spacers, steering blocks, kingpins, stub axles, springs & hardware.	1	15.00
3211	STEERING BLOCKS	pr	2.00
3213	STUB AXLES, WITH CLIPS	pr	2.50
4187	NYLON FRONT AXLE WASHERS	12	1.00
3216	STEEL FRONT AXLE WASHERS	12	1.00
3214	"E" CLIPS	10	1.00
8179	SUSPENSION ARM SPACER	pr	1.00
4115	SUSPENSION ARM	pr	4.00
4116	SPRINGS, .024	pr	2.00
4117	SPRINGS, .022	pr	2.00
4113	SPRINGS, .020 (kit springs)	pr	2.00
4114	SPRINGS, .018	pr	2.00
4119	SPRINGS, .016.(silver)	pr	2.00
4118	SPRINGS, .014 (black)	pr	2.00
4123	KINGPIN	pr	4.00
4127	SHIM SET, 0 and 2 degree	2pr	1.50
3752	TIE ROD AND LINKAGE KIT	1	4.00
8180	FRONT END SCREW SET, 4 each of 8-32 x 1", 2 each of 8-32 x 1 1/8"	6	2.00
8182	8-32 PLAIN NUTS	6	2.00
8445	RC10L SERVO SAVER, replaces #5551	1	6.60
3323	#8 THICK ALUM. WASHERS, for body mount spacers	12	1.50

CHASSIS PARTS

part #	description	qty	price	part #	description	qty	price
--------	-------------	-----	-------	--------	-------------	-----	-------



FOR RC10L2/L2O



8174	RC10L2 CHASSIS, graphite	1	60.00
8302	RC10L2O CHASSIS, graphite	1	60.00
8189	RC10L2 MOLDED NERF BAR, long	2	4.00
8312	RC10L2O MOLDED NERF BAR	1	2.00
8207	RC10L2 REAR CHASSIS BRACE, graphite	1	8.50
8313	RC10L2O REAR CHASSIS BRACE, graphite	1	7.50

FOR ALL RC10L SERIES CARS

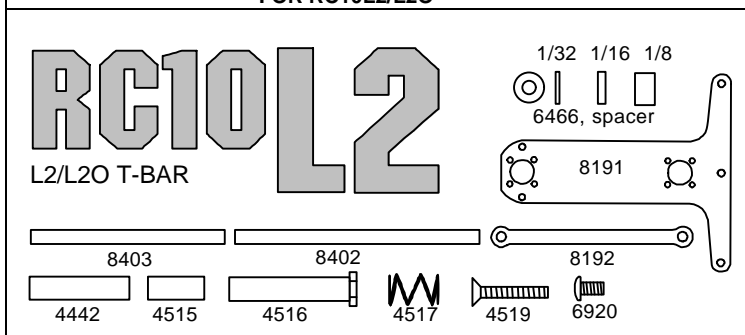
8177	FRONT BUMPER, plastic	1	3.50
8184	ANTENNA/SHOCK MOUNT	1	1.50
8187	FRONT BUMPER, large	1	4.00
8303	SS FRONT BUMPER	1	4.00

FOR RC10L/LS/LSS/LSO ONLY

8175	RC10L/LS FIBERGLASS CHASSIS	1	22.00
8176	RC10L/LS GRAPHITE CHASSIS	1	60.00
8178	RC10L/LS FRONT END BRACE, graphite	1	4.00
8205	RC10L/LS REAR CHASSIS BRACE KIT, similar to Super Speedway rear brace but for standard RC10L/LS	1	10.00
8300	RC10LSS/LSO FIBERGLASS CHASSIS	1	22.00
8301	RC10LSS/LSO GRAPHITE CHASSIS	1	60.00
8306	RC10LSS/LSO FRONT END BRACE, fiberglass	1	2.00
8307	RC10LSS/LSO FRONT END BRACE, graphite	1	3.00
8309	RC10LSS/LSO REAR CHASSIS BRACE, fiberglass	1	3.00
8310	REAR CHASSIS BRACE, graphite, Fits RC10LS/LSS/LSO (comes in #8205 brace kit)	1	7.00
8311	REAR CHASSIS STANDOFFS, for RC10L/LS/LSS/LSO	2	1.50
8314	RC10LSS/LSO NERF BARS, fiberglass	2	4.00

T-BAR & DAMPENER ASSEMBLY

FOR RC10L2/L2O

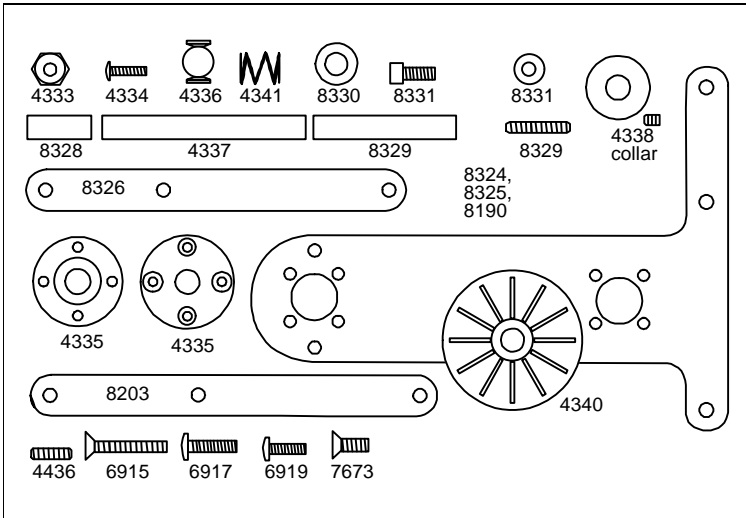


8191	RC10L2/L2O T-BAR, symmetrical, fiberglass	1	6.50
8192	RC10L2/LSO T-BAR BRACE, graphite	1	3.00
8402	RC10L2 CROSS BRACE	1	3.00
8403	RC10L2O CROSS BRACE	1	3.00
4442	CHASSIS/DAMPENER BRACE STANDOFF for RC10L2/L2O (also fits RC12LW/LS/LC)	1	1.50
4515	DAMPENER CENTER POST, Aluminum, for RC10L2/L2O (also fits RC12LC)	1	1.50
4516	DAMPENER POST, Molded, for RC10L2/L2O (also fits RC12LC)	1	1.50
4517	DAMPENER SPRINGS, for RC10L2/L2O (also fits RC12LC)	2	1.50
4519	FLAT HEAD SOCKET SCREW, 4-40 x 9/16"	6	2.00
6466	SHOCK DOWNSTOP, (travel limiter), 4 ea. of 3 sizes 1/8" (.125"), 1/16" (.062") and 1/32" (.031") (NOTE: The .031" size is used as a retaining washer for these cars)	set	1.50
6920	4-40 X 3/16" BUTTON HEAD Socket screw	6	2.00

FOR ALL RC10L SERIES CARS

(*) denotes non-standard discount item. (**) denotes short discount or net item.

part #	description	qty	price	part #	description	qty	price
--------	-------------	-----	-------	--------	-------------	-----	-------



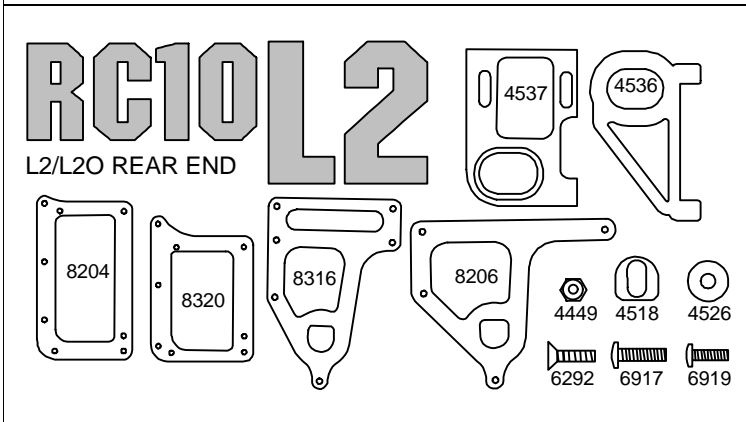
4334	PIVOT SOCKET SCREWS (2-56 X 5/16" BHS)	8	1.50
4335	PLASTIC PIVOT SOCKET	1	1.50
4336	STEEL PIVOT BALL	1	2.00
4340	DAMPENER PLASTIC WASHER	2	1.00
8330	SS/L3 DAMPENER O-RINGS	4	1.25
4436	TWEAK SET SCREW, 4-40 X 5/16"	4	1.50
6919	4-40 X 5/16 BUTTON HEAD Socket Screw	6	2.00
7673	4-40 X 5/16" FLAT HEAD Socket Screw	6	2.00

FOR RC10L/LS/LSS/LSO

4341	DAMPENER SPRING	2	1.00
4337	ALUMINUM DAMPENER TUBE (Only fits original RC10L's without rear chassis brace.)	1	1.00
4338	ALUMINUM TUBE COLLAR, LOWER	1	1.50
6915	TWEAK SET SCREW, 4-40 X 5/16"	4	1.50
6917	4-40 X 3/8" FLAT HEAD Socket Screw	6	2.00
8328	LOWER DAMPENER STANDOFF (For use with rear chassis brace)	1	1.00
8329	UPPER DAMPENER POST & STUD (For use with rear chassis brace)	1	1.50
8331	RC10LSS/LSO TWEAK SCREWS	2	1.00
8190	RC10L/LS T-BAR, .075	1	5.00
8203	RC10L/LS T-BAR SPACER, fiberglass	1	2.00
8324	RC10LSS/LSO T-BAR, .063 fiberglass	1	4.00
8325	RC10LSS/LSO T-BAR, .075 fiberglass	1	5.00
8326	RC10LSS/LSO T-BAR SPACER	1	2.00

REAR END ASSEMBLY

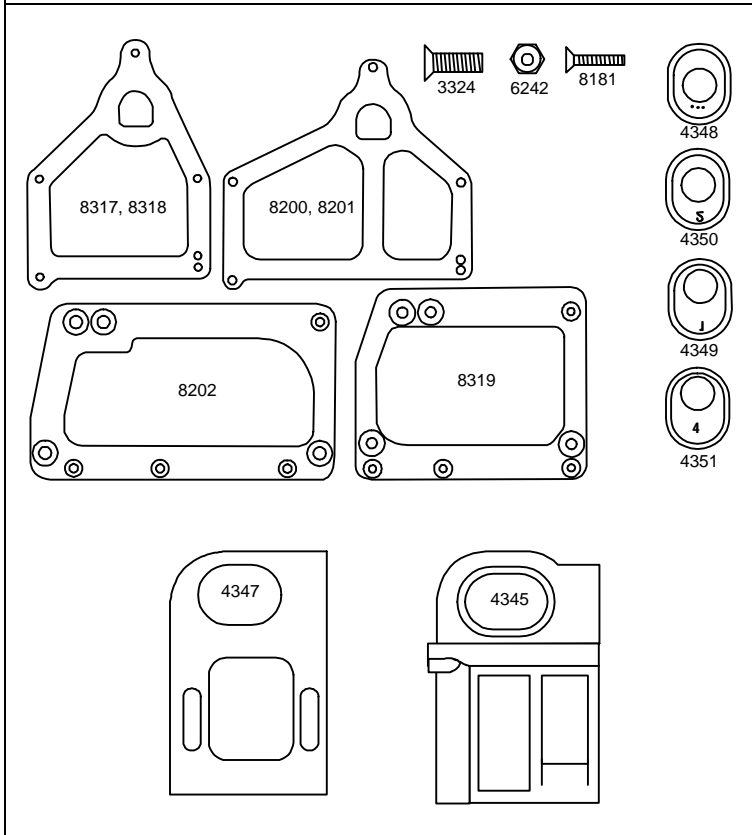
FOR RC10L2/L20



8204	RC10L2 LOWER POD PLATE, aluminum	1	11.00
8320	RC10L20 LOWER POD PLATE, aluminum	1	11.00
8206	RC10L2 DAMPENER PLATE	1	14.00
8316	RC10L20 DAMPENER PLATE	1	12.00
4449	4-40 LOCKNUT. Gold anodized, small pattern	5	2.50
4518	DAMPENER ROLL STOPS, Molded inserts	2	1.50
4526	T-BAR SPACERS, molded	3	1.50

4536	LEFT REAR BULKHEAD, molded	1	3.00
4537	MOTOR BULKHEAD, Aluminum	1	20.00
6292	4-40 X 3/8" FLAT HEAD Socket Screw	6	2.00
6917	4-40 X 3/8" FLAT HEAD Socket Screw	6	2.00
6919	4-40 X 5/16 BUTTON HEAD Socket Screw	6	2.00

FOR ALL RC10L SERIES CARS



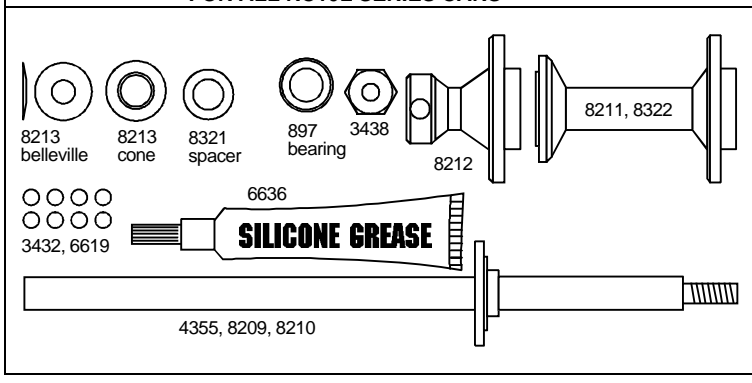
4348	AXLE BEARING HEIGHT ADAPTER, #0, no offset	pr	1.00
4349	AXLE BEARING HEIGHT ADAPTER, #1 offset	pr	1.00
4350	AXLE BEARING HEIGHT ADAPTER, #2 offset	pr	1.00
4351	AXLE BEARING HEIGHT ADAPTER, #4 offset	pr	1.00

FOR RC10L/LS/LSS/LSO ONLY

3324	8-32 x 1/2" ALUM. FLATHEAD SCREWS	16	2.00
6242	LOCKNUTS 4-40	6	1.00
8181	4-40 x 1/2 FLAT HEAD SOCKET SCREWS	6	1.00
4345	LEFT HAND PLASTIC BULKHEAD	1	2.50
4347	RIGHT HAND ALUMINUM BULKHEAD	1	20.00
8200	RC10L/LS FIBERGLASS UPPER BRACE	1	7.00
8201	RC10L/LS GRAPHITE UPPER BRACE	1	18.00
8202	RC10L/LS ALUMINUM LOWER BRACE	1	9.00
8317	RC10LSS/LSO UPPER BRACE, fiberglass	1	6.00
8318	RC10LSS/LSO UPPER BRACE, graphite	1	12.00
8319	RC10LSS/LSO LOWER BRACE, aluminum	1	7.50

REAR AXLE ASSEMBLY

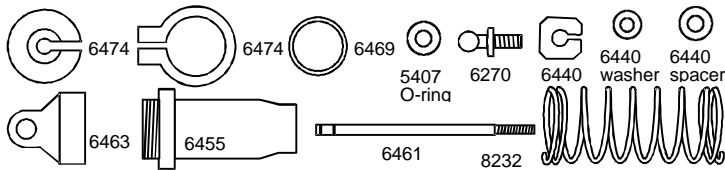
FOR ALL RC10L SERIES CARS



(*) denotes non-standard discount item. (**) denotes short discount or net item.

part #	description	qty	price	part #	description	qty	price
897	FLANGED BALL BEARINGS, 3/8 OD x 1/4 ID	pr	13.00	5425	SILICONE SHOCK OIL, 80 wt, 2 oz bottle	1	3.50
6626	1/8" DIFF BALL (also available as #3432)	16	1.50	PRECISION MACHINED RACING PINION GEARS			
6619	1/8" CARBIDE DIFF BALLS	8	8.00	8252	15 TOOTH, 48 PITCH	1	6.00
3438	8-32 ALUM. LOCKNUTS for #3437 axle	3	1.50	8253	16 TOOTH, 48 PITCH	1	6.00
6625	DIF DRIVE RINGS	2	1.50	8254	17 TOOTH, 48 PITCH	1	6.00
6636	SILICON DIF GREASE, 1/4 oz. tub	1	2.50	8255	18 TOOTH, 48 PITCH	1	6.00
8212	LEFT HAND WHEEL HUB	1	6.00	8256	19 TOOTH, 48 PITCH	1	6.00
8213	DIF THRUST CONE	1	2.00	8257	20 TOOTH, 48 PITCH	1	6.00
8321	REAR AXLE SPACERS, aluminum	2	1.50	8258	21 TOOTH, 48 PITCH	1	6.00
8209	NEW! REAR AXLE, fiberglass. For RC10LSS, LSO, L2O	1	14.00	8259	22 TOOTH, 48 PITCH	1	6.00
8210	GRAPHITE AXLE, For RC10L/LS/L2	1	22.50	8260	23 TOOTH, 48 PITCH	1	6.00
8211	RIGHT WHEEL HUB/DIFF SPACER, For RC10L/LS/L2	1	8.00	8261	24 TOOTH, 48 PITCH	1	6.00
4355	REAR AXLE, graphite, For RC10LSS/LSO/L2O	1	15.00	8262	25 TOOTH, 48 PITCH	1	6.00
8322	RIGHT WHEEL HUB/DIFF SPACER, For RC10LSS/LSO/L2O	1	8.00	8263	26 TOOTH, 48 PITCH	1	6.00

SHOCK ASSEMBLY



ORIGINAL STYLE EXTERNAL SEAL SHOCK

6455	SHOCK BODY, 0.4 bore x 0.56 stroke, gold (original external seal cavity design)	1	5.50
6463	SHOCK END CAP, gold (for original shock body only)	1	3.00
6467	REBUILD KIT, for 2 shocks, 0.4 bore	1	4.00
NEW INTERNAL SEAL STYLE SHOCK			
8230	SHOCK KIT gold (new internal seal design)	1	15.00
6427	SHOCK BODY, .0.4 bore x 0.56 stroke, gold (new internal seal design)	1	6.75
6438	SHOCK BODY, 0.4 bore x 0.56 stroke, hard anodized (new internal seal design)	1	7.75
6428	SHOCK END CAP, black, molded plastic (redesigned to fit the RC10L series cars)	1	2.25
6429	SHOCK ASSEMBLY TOOL	1	1.00
6439	SHOCK END CAP, black aluminum	1	3.00
6440	SHOCK REBUILD KIT for "New & Improved" shock. For 4 shocks	1	4.00

PARTS FOR ALL SHOCKS

5407	RED O-RING only, replacements for shock rebuild kits #6440 & 6467	8	2.00
6270	BALL JOINTS, threaded steel ball end	2	2.50
6461	SHAFT, 0.56 stroke	1	3.00
6469	"O" RING SHOCK CAP GASKET	4	1.50
6474	SPRING CLAMPS AND CUPS, 4 sets	4	3.00
6496	SHOCK SPRING, .SILVER, for new RC10L2/L2O	2	2.50
8232	SHOCK SPRING, BLACK, for RC10L/LS/LSS/LSO	2	2.50

SHOCK OILS

5412	SHOCK OIL, 50 wt, 1 oz bottle	1	1.25
5413	SHOCK OIL, 40 wt, 1 oz bottle	1	1.25
5414	SHOCK OIL, 30 wt, 1 oz bottle	1	1.25
5415	SHOCK OIL, 20 wt, 1 oz bottle	1	1.25
5416	SHOCK OIL, 10 wt, 1 oz bottle	1	1.25
5420	SILICONE SHOCK OIL, 10 wt, 2 oz bottle	1	3.50
5427	SILICONE SHOCK OIL, 15 wt, 2 oz bottle	1	3.50
5421	SILICONE SHOCK OIL, 20 wt, 2 oz bottle	1	3.50
5428	SILICONE SHOCK OIL, 25 wt, 2 oz bottle	1	3.50
5422	SILICONE SHOCK OIL, 30 wt, 2 oz bottle	1	3.50
5429	SILICONE SHOCK OIL, 35 wt, 2 oz bottle	1	3.50
5423	SILICONE SHOCK OIL, 40 wt, 2 oz bottle	1	3.50

PRECISION SPUR GEARS with dif ball holes

8280	75 TOOTH, 48 PITCH	1	4.00
8281	78 TOOTH, 48 PITCH	1	4.00
8282	81 TOOTH, 48 PITCH	1	4.00
8283	83 TOOTH, 48 PITCH	1	4.00
8284	85 TOOTH, 48 PITCH	1	4.00
8285	87 TOOTH, 48 PITCH	1	4.00

FRONT WHEELS & TIRES

See Associated's full-color Supplementary Catalog for pictures of all our wheels and tires

8125	FRONT WHEELS, lightweight	pr	5.00
8125B	FRONT WHEELS, black, lightweight	pr	5.00
8125Y	FRONT WHEELS, florescent yellow, lightweight	pr	5.00
3655	BALL BEARINGS FOR FRONT WHEELS, two pr req'd	pr	12.00
8126	FRONT WHEELS, chrome finish	pr	8.00
8130	FRONT TIRE DONUTS, Green type, for carpet	pr	6.00
8131	FRONT TIRE DONUTS, Black type, for asphalt	pr	4.50
8140	FRONT WHEELS/TIRES, Green type, mounted and trued, for carpet	pr	12.00
8141	FRONT WHEELS/TIRES, kit, Black type, mounted and trued, for asphalt	pr	12.00

REAR WHEELS & TIRES

8150	REAR WHEELS, lightweight	pr	6.00
8150B	REAR WHEELS, black, lightweight	pr	6.00
8150Y	REAR WHEELS, florescent yellow, lightweight	pr	6.00
8151	REAR WHEELS, chrome finish	pr	9.00
8155	REAR TIRE DONUTS, Green type	pr	8.50
8165	REAR WHEELS/TIRES, kit, Green type, mounted and trued	pr	17.00

REEDY MODIFIEDS PRODUCTS

MOTORS

REEDY STOCK MOTORS

Our latest generation stock motors offer laydown brushes and our updated 1.4mm thick can design. In addition the motor uses an entirely new magnet construction along with a new brush vibration dampening system. The plus versions are the same quality stock motors, but they come with our #768 brushes (FireHawk Plus) or #767 brushes (Conquest Plus), and #742 off road springs. They are also dyno tested and come with the dyno print out sheet that shows you the results of the dyno testing. Both versions of the Fire Hawk model are ROAR and NORRCA legal for racing.

part #	description	qty	price	part #	description	qty	price
300	FIRE HAWK STOCK, 27 turn/ROAR specification	1	36.00				
301	FIRE HAWK PLUS, dyno sheet included	1	40.00				
302	CONQUEST 27 STOCK, 36°	1	36.00				
303	CONQUEST PLUS, dyno sheet included	1	40.00				
580	DS SPEC MOTOR, 23 turn, 0.8mm wire, 18° fixed timing, bushing, replaceable brushes. Standard, spec stock motor included in #8080 and 8081 DS kits.	1	30.00				

DS MODIFIED COMPETITION MOTORS

Designed for Trans Am and touring car racing, each motor is hand wound, dynamically balanced, and assembled complete with adjustable timing and dual ball bearings.

586	DS "Z" 17 turn triple	1	55.00
587	DS "B" 15 turn triple	1	55.00
588	DS "A" 14 turn triple	1	55.00
589	DS "E" 13 turn triple	1	55.00
590	DS "H" 12 turn triple	1	55.00
591	DS "T" 11 turn triple	1	55.00
592	DS "Y" 10 turn triple	1	55.00

REEDY TRI SONIC SERIES

Reedy Has taken the design of the Ultra Sonic motor to a higher performance level. This standard upright brush motor uses the same improved can and magnet design as our new stock motors. It also uses the new brush dampening system that helps improve brush and commutator life. The upright brush design makes this a high RPM motor design.

310	TRI SONIC "S" on road, 12 double	1	90.00
311	TRI SONIC "I" on road, 12 turn quint	1	90.00
312	TRI SONIC "M" on road, 13 double	1	90.00
313	TRI SONIC "C" on road, 13 triple	1	90.00
314	TRI SONIC "D" on road, 14 quad	1	90.00
315	TRI SONIC "B" on road, 15 triple	1	90.00
316	TRI SONIC "V" on road, 16 quint	1	90.00
317	TRI SONIC "O" 11 turn double	1	90.00
318	TRI SONIC "P" 13 turn quint	1	90.00
319	TRI SONIC "A" 14 turn triple	1	90.00
320	TRI SONIC "F" 15 turn quint	1	90.00
321	TRI SONIC "X" 10 turn quad	1	90.00
323	TRI SONIC "?" 10 turn double	1	90.00
324	TRI SONIC "Y" 10 turn triple	1	90.00
326	TRI SONIC "93" 9 turn triple	1	90.00

REEDY MODIFIED, SONIC SERIES MOTOR

"Turbo Cooled" modified motors with "M" magnets. See Sonic portion of Motor Accessories section for springs and brushes.

525	SONIC "A" 14 turn triple	1	85.00
529	SONIC "E" 13 turn triple	1	85.00
531	SONIC "G" 11 turn quad	1	85.00
533	SONIC "L" 14 turn double	1	85.00
534	SONIC "M" 13 turn double	1	85.00
535	SONIC "O" 11 turn double	1	85.00
538	SONIC "S" 12 turn double	1	85.00
539	SONIC "?" 10 turn double	1	85.00
541	SONIC "T" 11 turn triple	1	85.00
542	SONIC "Y" 10 turn triple	1	85.00
544	SONIC "I" 12 turn quint	1	85.00
545	SONIC "W" 11 turn quint	1	85.00
546	SONIC "U" 10 turn quint	1	85.00
547	SONIC "X" 10 turn quad	1	85.00

REEDY MODIFIED, SONIC2 SERIES

The Sonic2 laydown brush modified motor updates the Sonic motor series by offering the same improvements we are using on the new stock and Tri Sonic modified motors. The large commutator and laydown brushes make this a great high load or torque application motor with only slightly less RPM than the Tri Sonic motor series.

350	SONIC 2 "S" 12 turn double	1	90.00
351	SONIC 2 "O" 11 turn double	1	90.00
352	SONIC 2 "?" 10 turn double	1	90.00
354	SONIC 2 "T" 11 turn triple	1	90.00
355	SONIC 2 "X" 10 turn quad	1	90.00
356	SONIC 2 "W" 11 turn quint	1	90.00
357	SONIC 2 "J" 12 turn quad	1	90.00
358	SONIC 2 "M" 13 turn double	1	90.00
364	SONIC 2 "92" 9 turn double	1	90.00

REEDY MODIFIED, ULTRA SONIC SERIES MOTOR

560	ULTRA SONIC "S" 12 turn double	1	85.00
561	ULTRA SONIC "I" 12 turn quint	1	85.00
562	ULTRA SONIC "W" 11 turn quint	1	85.00
564	ULTRA SONIC "C" 13 turn quad	1	85.00
565	ULTRA SONIC "M" 13 turn double	1	85.00
566	ULTRA SONIC "P" 13 turn quint	1	85.00
567	ULTRA SONIC "L" 14 turn double	1	85.00
568	ULTRA SONIC "D" 14 turn quad	1	85.00
569	ULTRA SONIC "F" 15 turn quad	1	85.00
570	ULTRA SONIC "V" 16 turn quad	1	85.00

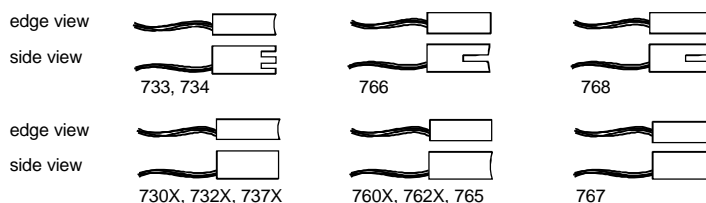
MOTOR ACCESSORIES

FOR ALL MOTORS

SP-300	REEDY COMM LATHE, commutator truing lathe for modified motors only	1	250.00	**
SP-301	CARBIDE INSERT, replacement cutter tip for motor truing lathe tool	1	20.00	**
SP-302	LATHE BATTERY PACK, 5 cell (6 volt) for use as a lathe power source	1	20.00	**
6515	MOTOR MOUNTING Screw, 3mm metric	4	1.00	
6520	CAPACITOR, noise suppression, 0.10 uf.	2	2.00	
745	SCHOTTKY DIODE, special diode for motors & high frequency speed controls. Brakes run cooler and work more effectively. Helps improve battery regeneration.	2	5.25	

FOR RC10L/LS ONLY

8110	MOTOR SPACER	1	2.00
------	--------------	---	------



MODIFIED MOTOR BRUSHES AND SPRINGS for standard commutator motors

730X	NEW & IMPROVED PERFORMANCE BRUSH. Low resistance, long comm. life	pr	3.00
732X	NEW & IMPROVED 1:12 AND 1:10 ON ROAD BRUSH. Competition on road brush only. Short brush and comm life.	pr	3.00
737X	NEW STANDARD 1:10 OFF ROAD BRUSH. Used in assembly of all upright brush modified motors.	pr	3.00
733	STANDARD ON ROAD CLIPPER BRUSH, with slotted adjustable contact area. Allows brushes to be tuned for motor and track. Standard brush, on road and stock motor compound	pr	4.50

part #	description	qty	price	part #	description	qty	price
--------	-------------	-----	-------	--------	-------------	-----	-------

734	STANDARD OFF ROAD CLIPPER BRUSH, with slotted adjustable contact area. Allows brushes to be tuned for motor and track. Standard brush, off road compound	pr	4.50
740	COPPER HEAD SPRING, for off road racing	pr	2.50
741	COPPER HEAD SPRING, on road, low resistance, high temperature.	pr	2.50

**STOCK MOTOR BRUSHES AND SPRINGS
for large commutator motors**

742	SONIC MOTOR SPRING, High tension copper clad mat'l. Off road and on road uses.	pr	3.00
760X	NEW LAYDOWN 1:10 OFF ROAD BRUSH, same compound as the #737X brush. Low resistance, long comm life.	pr	3.00
762X	NEW LAYDOWN PERFORMANCE BRUSH. Same compound as 730X brush. Low resistance, long comm. life.	pr	3.00
767	SERRATED BRUSH, contoured performance brush for laydown stock motor	pr.	3.00
768	SERRATED BRUSH, contoured performance brush with single vertical cut for laydown stock motor.	pr	3.50

MOTOR PARTS

ARMATURES

Small com, tapered shank, hand wound, epoxy dipped and zero gravity baked for precise balancing. Armature cut to perfection, epoxy balanced, then drill balanced for the final touch.

450	SMALL COM ARMATURE 11 turn double	1	35.00
451	SMALL COM ARMATURE 11 turn triple	1	35.00
452	SMALL COM ARMATURE 12 turn double	1	35.00
453	SMALL COM ARMATURE 12 turn quint	1	35.00
454	SMALL COM ARMATURE 13 turn double	1	35.00
455	SMALL COM ARMATURE 13 turn quint	1	35.00
456	SMALL COM ARMATURE 14 turn triple	1	35.00
457	SMALL COM ARMATURE 14 turn quint	1	35.00
458	SMALL COM ARMATURE 15 turn triple	1	35.00
459	SMALL COM ARMATURE 16 turn triple	1	35.00

Large com, cooling fans for heavy loads, tapered shank, hand wound, epoxy dipped and zero gravity baked for precise balancing. Armature com cut to perfection, epoxy balanced, then drill balanced for the final touch.

470	LARGE COM ARMATURE 10 turn double	1	35.00
471	LARGE COM ARMATURE 10 turn quad	1	35.00
472	LARGE COM ARMATURE 11 turn double	1	35.00
473	LARGE COM ARMATURE 11 turn quad	1	35.00
474	LARGE COM ARMATURE 12 turn double	1	35.00
475	LARGE COM ARMATURE 12 turn quint	1	35.00

OTHER MOTOR PARTS

440	MOTOR BALL BEARINGS, replacement modified motor ball bearings, 1/8" I.D. x 3/8" O.D. unflanged.	pr	15.00
442	MODIFIED MOTOR END BELL. For standard commutator. Upright brush style. With ball bearing installed	1	24.00
443	MODIFIED MOTOR END BELL. For large commutator. Laydown brush style. With ball bearing installed.	1	24.00
445	MODIFIED MOTOR CAN. Replace worn out and demagnetized cans for new ones. Yokomo can with 4.9 magnets and ball bearing installed.	1	24.00
446	SHIM KIT, fifteen precision shims for spacing armatures. Five each of .010", .005", & .003" sizes. Comes with instructions. Will also fit any 1/8" shaft or pin for removing excess end play.	15	2.50


REEDY NI-CAD BATTERIES

REEDY ZAPPERS BATTERIES

REEDY ZAPPERS BATTERIES with NEW Voltage Maximizing Technology jointly developed and used exclusively by Reedy Modifieds and Team Orion

640	REEDY NOVA ZAPPERS, unmatched & unassembled 6-cell. Each cell goes through special high voltage treatment process, giving you high voltage cells in a sport pack.	6	65.00
642	REEDY ZAPPERS, cycled & matched, unassembled 6-cell with high voltage processing. Recommended for stock class racing and four minute off road racing.	6	90.00
643	REEDY ZAPPERS, cycled & matched unassembled 7-cell with high voltage processing.	7	105.00
644	REEDY WC ZAPPERS, cycled & matched premium unassembled 6-cell w/high voltage processing. Recommended for on road, oval and truck competition.	6	120.00
645	REEDY NOVA-ZAPPERS 2000, unmatched, but have high voltage. Unassembled. Great for all-around racing.	6	75.00
646	REEDY ZAPPERS 2000, Incorporates the Sanyo RC2000 batteries and VMT. Unassembled. Recommended for off road racing and stock class racing.	6	90.00
647	REEDY WC ZAPPERS 2000, the top percentage of cells cycled, voltage processed, and matched. Unassembled. Recommended for on road racing and 6 cell truck racing.	6	110.00

NOVA SERIES 1700 mAH SCRC

636	NOVA, 6 cell matched unassembled pack, 1700 mAH SCRC-SP cells, for off road or club level on road.	6	61.50
637	NOVA 7 cell matched unassembled pack, 1700 mAH SCRC-SP cells, for off road or club level on road.	7	71.75
650	BATTERY STRAP BRAID	6	1.50
651	REEDY BATTERY BARS, silver treated battery bars, for assembling individual cells into packs	6	4.00
652	 BATTERY POWER CONNECTOR PIN. Eliminates hassle of soldering battery packs to radio leads. Quick connect/disconnect.	5pr	10.00

BATTERY ACCESSORIES

650	BATTERY BRAID STRIPS	6	1.50
651	REEDY BATTERY BARS, silver treated battery bars for assembling individual cells into packs. Low electrical resistance for more power. Higher strength reinforces construction of your pack. Soldering is easier.	6	4.00
652	BATTERY POWER CONNECTOR PINS. Eliminates hassle of soldering battery pack to radio leads. Quick connect/disconnect	5pr	10.00

REEDY T-SHIRT

See Associated's Pictorial Catalog for full-color pictures of all items below

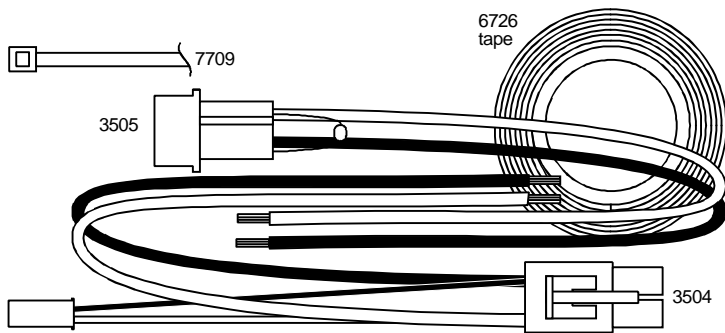
SP-37	REEDY FIRE HAWK T-SHIRT. Fluorescent orange "Fire Hawk" and white Reedy logo on black T-shirt. Printed both sides. Specify XL only	1	11.00*
SP-37 XXL	REEDY FIRE HAWK T-SHIRT. Fluorescent orange "Fire Hawk" and white Reedy logo on black T-shirt. Printed both sides. Specify XXL only	1	13.00*

REEDY BODY ACCESSORIES

(*) denotes non-standard discount item. (**) denotes short discount or net item.

part #	description	qty	price	part #	description	qty	price
711	REEDY CAR WASH. Great for cleaning gas and electric cars and bodies. Lexan safe and biodegradable. Not for electrical components. 4 oz. bottles sold in cases of 12 only. Price reflects \$6.00 per bottle. (Purchase individual bottles at your hobby shop or race track.)	12	72.00				
717	REEDY MODIFIED DECALS, 1995 style Reedy Logo, 3 sizes in both black and white (5.5" x 8.5" sheet)	1	2.50				
718	REEDY MODIFIED DECALS, 1995 style Reedy Logo, 3 sizes in both fluorescent red and green (5.5" x 8.5" sheet)	1	3.50				

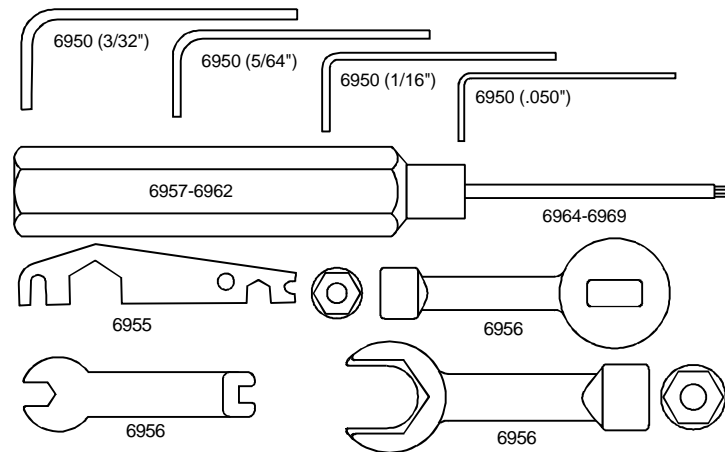
ELECTRICAL



3504	MOTOR CONNECTOR, JST type	pr	1.00
3505	MOTOR CONNECTOR, AMPS type	pr	2.00
3737	16 GAUGE STRANDED, SUPERFLEX WIRE, high temp. silicon rubber insulation. 2 ft. of orange, 2 ft. of black	2	5.00
6726	NEW IMPROVED SERVO TAPE, black roll, same adhesion, but easier to remove	36"	2.50
7709	NYLON WIRE TIES, 4 inch each	12	1.25

TOOLS & HARDWARE

TOOLS



SP-85	1/4" NUT DRIVER	1	7.50*
6950	ALLEN WRENCH set, 3/32", 5/64, 1/16, .050	4	2.50
6955	SHOCK/TURNBUCKLE WRENCH, original Associated tool (silver colored)	1	2.50
6956	NEW! ASSOCIATED MOLDED TOOL SET Wrenches to install 11/32", 1/4" and 3/16" nuts. Adjusts 1/8" and 3/16" turnbuckles and installs and removes Associated shock caps	set	2.50
6957	.050" ALLEN DRIVER, precision ground replaceable tip, alum. hex handle (clear anodized)	1	10.50
6958	1/16" ALLEN DRIVER, precision ground replaceable tip, alum. hex handle (black anodized)	1	10.50

6959	5/32" ALLEN DRIVER, precision ground replaceable tip, alum. hex handle (blue anodized)	1	10.50
6960	3/32" ALLEN DRIVER, precision ground replaceable tip, alum. hex handle (gold anodized)	1	10.50
6961	2.5mm ALLEN DRIVER, precision ground replaceable tip, alum. hex handle (green anodized)	1	10.50
6962	1.5mm ALLEN DRIVER, precision ground replaceable tip, alum. hex handle (purple anodized)	1	10.50
6964	.050 REPLACEMENT TIP, precision ground	1	5.50
6965	1/16" REPLACEMENT TIP, precision ground	1	5.50
6966	5/64" REPLACEMENT TIP, precision ground	1	5.50
6967	3/32" REPLACEMENT TIP, precision ground	1	5.50
6968	2.5mm REPLACEMENT TIP, precision ground	1	5.50
6969	1.5mm REPLACEMENT TIP, precision ground	1	5.50
8416	SHOCK/TURNBUCKLE WRENCH, new Associated tool, fits Dynamic Strut Front End (gold colored)	1	2.50

MISCELLANEOUS HARDWARE

3721	SELF-TAPPING Screw, #2 X 1/4" slotted	12	1.00
4436	4-40 X 5/16" SOCKET SET SCREW	4	1.50
4448	ALUM. BALL END AND CUP	2ea	3.00
6270	BALL JOINTS, threaded steel ball end	2	2.50
6299	E-CLIPS for 1/8" shafts	12	1.00

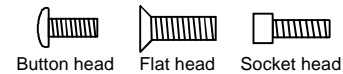
NUTS

3438	ALUMINUM 8-32 LOCKNUT	3	1.50
4184	4-40 NYLON LOCKNUT	6	1.00
4185	8-32 NYLON LOCKNUT	6	1.00
4449	4-40 ALUMINUM LOCKNUT. Gold anodized, small pattern	5	2.50
6222	4-40/5-50 SELF THREADING NYLON LOCKNUT, black, for #8443 axles	8	2.00
6242	4-40 STEEL LOCKNUTS	6	1.00
6295	4-40 NUT, 6 each plain nut, nylon and steel locknut	18	2.00
6296	8-32 NUT, 6 each aluminum and nylon locknuts	12	3.00
6937	4-40 ALUMINUM LOCKNUT. Blue anodized standard	6	3.00
7260	4-40 THIN PLAIN NUT	12	2.00

WASHERS

3216	#4 STEEL FLAT WASHER, 1/8" I.D.	12	1.00
3323	#8 ALUMINUM FLAT WASHER, thick	12	1.50
6936	#4 ALUMINUM FLAT WASHER	10	1.00

SCREWS



4334	2-56 X 5/16" BUTTON HEAD Socket Screw	8	1.50
6920	4-40 X 3/16" BUTTON HEAD Socket screw (also sold under #6568)	6	2.00
6288	4-40 x 1/4" BUTTON HEAD Socket screw	6	2.00
6919	4-40 X 5/16" BUTTON HEAD Socket Screw	6	2.00
6917	4-40 X 3/8" BUTTON HEAD Socket Screw	6	2.00
6918	4-40 X 1/2" BUTTON HEAD Socket Screw	6	2.00
6280	8-32 X 1/2" ALUM. FLAT HEAD Screw	16	2.00
6291	4-40 X 1/4" FLAT HEAD Socket Screw	6	2.00
7673	4-40 X 5/16" FLAT HEAD Socket Screw	6	2.00
6292	4-40 X 3/8" FLAT HEAD Socket Screw	6	2.00
6922	4-40 X 1/2" FLAT HEAD Socket Screw	6	2.00
4519	4-40 x 9/16" FLAT HEAD Socket Screw	6	2.00
6923	4-40 X 3/8" FLAT HEAD Socket Screw	6	2.00
6939	4-40 X 1/4" ALUM. FLAT HEAD Socket Screw	6	2.00
6933	4-40 x 5/16" ALUM. FLAT HEAD Socket Screw	6	2.00
6934	4-40 x 3/8" ALUM. FLAT HEAD Socket Screw	6	2.00
6938	4-40 x 1/2" ALUM. FLAT HEAD Socket Screw	6	2.00
9269	5-40 x 1/2" FLAT HEAD Socket Screw	6	2.00
6285	4-40 X 1/4" SOCKET HEAD Cap Screw	12	2.00
6932	4-40 X 5/16" SOCKET HEAD CAP Screw	6	2.00
6924	4-40 X 3/8" SOCKET HEAD Cap Screw	6	2.00
7874	4-40 X 7/16" SOCKET HEAD Cap Screw	8	2.50
6925	4-40 X 1/2" SOCKET HEAD CAP Screw	6	2.00

(*) denotes non-standard discount item. (**) denotes short discount or net item.

part #	description	qty	price	part #	description	qty	price
6926	4-40 X 5/8" SOCKET HEAD Cap Screw	6	2.00				
6927	4-40 X 3/4" SOCKET HEAD CAP screw	6	2.00				
6928	4-40 X 1" SOCKET HEAD CAP Screw	6	2.00				
6284	4-40 x 1/4" ALUM. SOCKET HEAD Cap Screw	12	4.00				
4145	4-40 x5/16" ALUM. SOCKET HEAD Cap Screw	6	2.00				
6860	4-40 X 3/8" ALUM. SOCKET HEAD Cap Screw	6	2.50				
7873	4-40 X 7/16" ALUM. SOCKET HEAD Cap Screw	6	2.00				
7801	4-40 X 5/8" ALUM. SOCKET HEAD Cap Screw	6	2.00				
6935	4-40 X 1" ALUM. SOCKET HEAD CAP Screw	4	3.00				
6951	4-40 X 1/8" PINION SET SCREWS with wrench	6	2.50				
8115	ALUMINUM lightweight screw set for RC10LS/LSO (blue anodized)	1	8.50				
MISCELLANEOUS							
<i>See Associated's Supplementary Catalog for full-color pictures of all items below</i>							
CAR CARRIER EQUIPMENT							
SP-100	ASSOCIATED CAR CARRIER BOX, cardboard outer box w/locking end flap, unassembled. Includes three 24 x 12 x 6" inner boxes, unassembled (fits inside new #SP-415 carrier bag)	1	15.00 **				
SP-101	INNER BOXES, 24 x 12 x 6", unassembled. Replacement cardboard inner boxes for car carrier box #SP-100	3	5.25**				
SP-415	ASSOCIATED CAR CARRIER BAG, black nylon with brass zipper (fits over #SP-100 car carrier box)	1	39.95 **				
WEARABLES							
SP-37	REEDY FIRE HAWK T-SHIRT, Fluorescent orange "Fire Hawk" and white Reedy logo on black T-shirt. Printed on both sides. Specify M, L, & XL.	1	11.00*				
SP-37 XXL	REEDY FIRE HAWK T-SHIRT, Fluorescent orange "Fire Hawk" and white Reedy logo on black T-shirt. Printed on both sides. Specify XXL only.	1	13.00*				
SP-41	NEW! ASSOCIATED B3 '97 WORLDS T-SHIRT. Full color front and back. Designs different on front and back. Specify M, L, XL	1	13.00*				
SP-41 XXL	NEW! ASSOCIATED B3 '97 WORLDS T-SHIRT. Full color front and back. Designs different on front and back. XXL size only	1	15.00*				
SP-410	TEAM ASSOCIATED JACKET, red, white & blue. Fully lined. Specify M,L,XL, XXL, XXXL	1	59.95 **				
VIDEOS							
6977	VHS VIDEO, "R/C CAR RACING '95". Featuring highlights from 1995's most exciting races from around the world!	1	19.95				
6978	VHS VIDEO, "R/C CAR RACING '96." Highlights from some of 1996's greatest races!	1	19.95				
6978P	PAL VIDEO, "R/C CAR RACING '96." International PAL format. Highlights from some of 1996's greatest races!	1	19.95				
6979	VHS VIDEO, "R/C CAR RACING '97." Highlights from some of 1997's greatest races!	1	19.95				
6979P	PAL VIDEO, "R/C CAR RACING '97." International PAL format. Highlights from some of 1997's greatest races!	1	19.95				