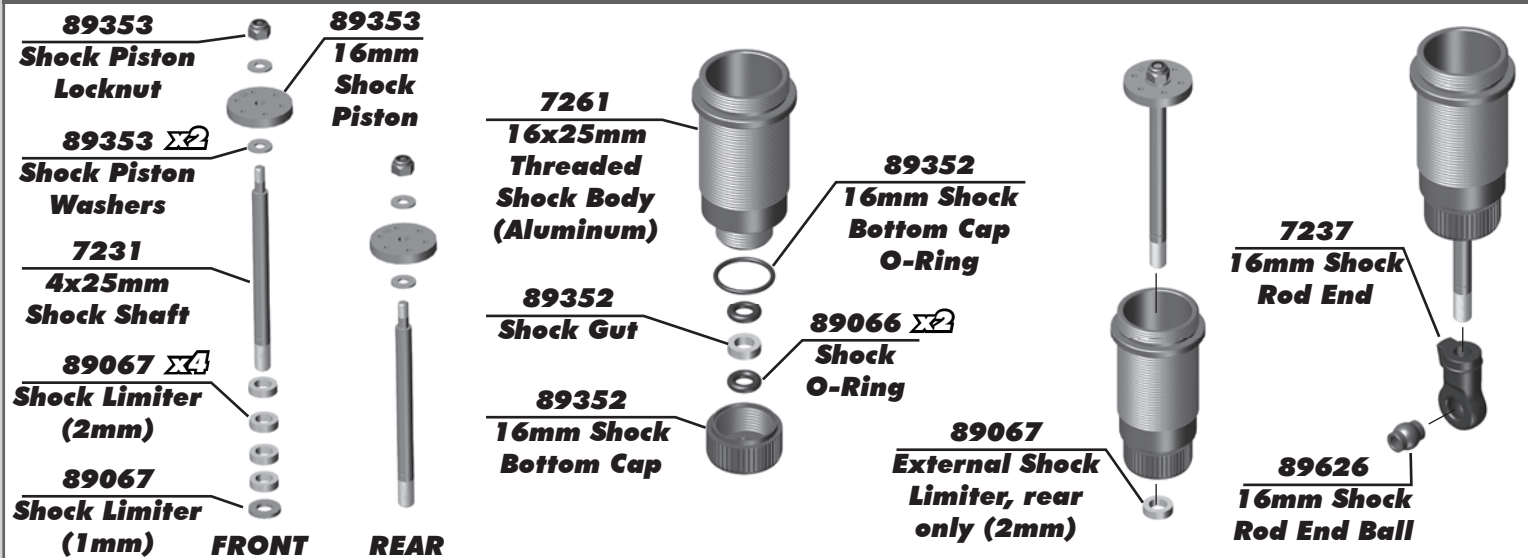


#7262 Shock Build Supplement

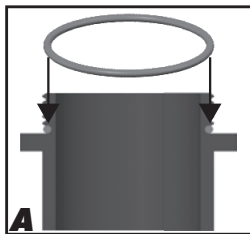
:: Shock Build



:: Shock Build - (cont.)

Filling Your Shocks:

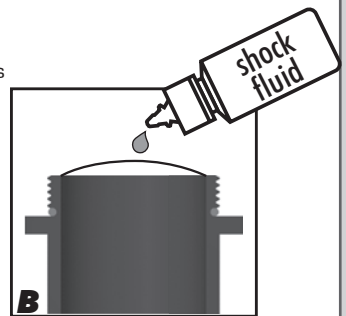
A) Add a drop or two of shock fluid to the shock cap O-ring and shock body threads. Then slide the O-ring over the threads on the shock body. Press the O-ring all the way down to the bottom of the threads.



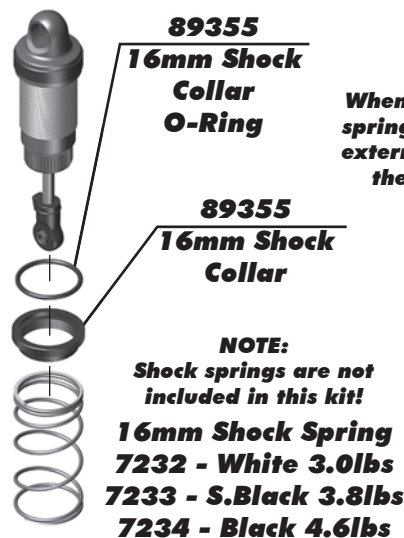
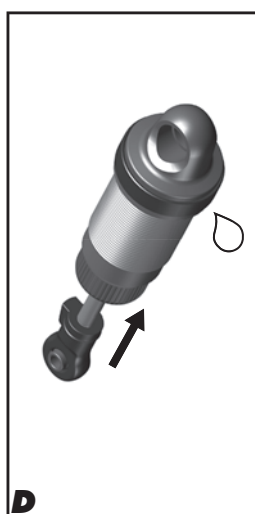
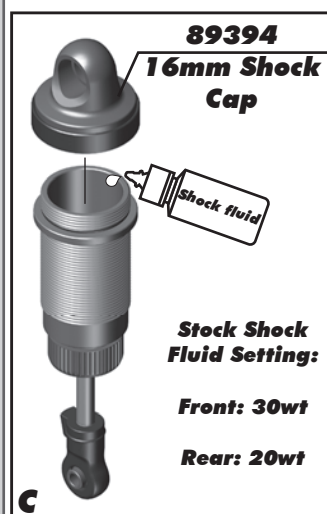
B) Fill your shocks to the top of the sides with shock fluid. Do not over fill the shock with oil.

C) Thread the shock cap onto the shock body. These are emulsion style shocks, initially there will be air at the top of the shock.

D) You should be able to compress the shaft into the shock all the way. If you cannot, you have added too much shock fluid. Unscrew the cap 3/4 turn and tilt the shock at a slight angle. Slowly compress the shaft to push out excess oil and tighten the cap.



:: Shock Build - (cont.)



NOTE:
When installing the shock spring cup, make sure any external limiters go above the shock spring cup!

NOTE:
Shock springs are not included in this kit!

16mm Shock Spring
7232 - White 3.0lbs
7233 - S.Black 3.8lbs
7234 - Black 4.6lbs

89354
16mm Shock Spring Cup

:: Optional 16mm Shock Accessories

NOTE:
If you are upgrading from a small bore shock to the larger #7262 16mm shock, you will need #7263 16mm Shock Kit Mounting Hardware and 16mm Shock Springs.

7232	16mm Shock Springs - White, 3.0lbs	Pr.
7233	16mm Shock Springs - S. Black, 3.8lbs	Pr.
7234	16mm Shock Springs - Black 4.6lbs	Pr.
7261	16x25mm Threaded Shock Body (Aluminum)	2
7263	16mm Shock Kit Mounting Hardware (for 4 shocks)	1
89335	16mm Shock Cap, Aluminum	2