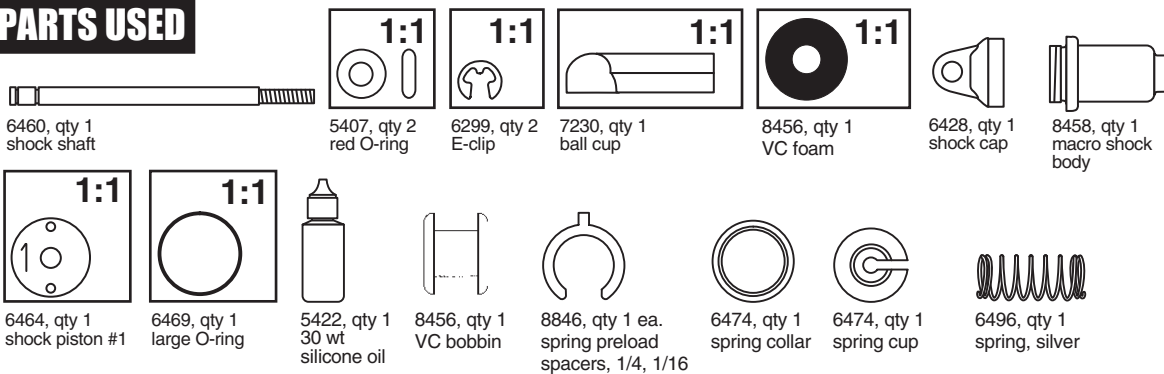
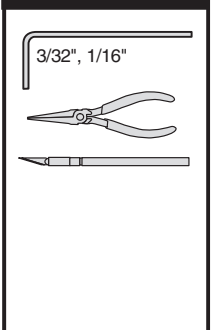


#8455 VCS MACRO SHOCK KIT by Team Associated

PARTS USED



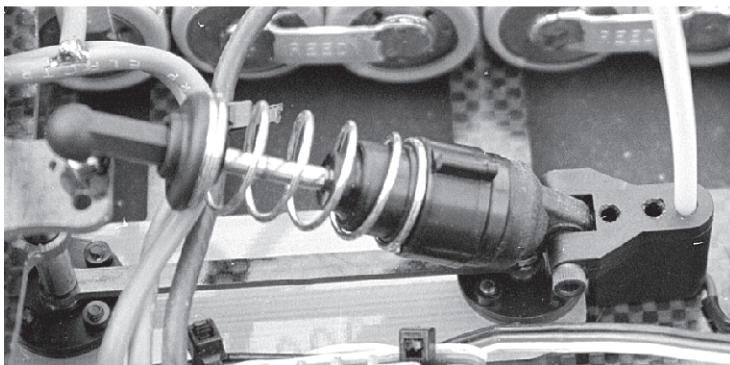
TOOLS USED



intro

ASSOCIATED'S VCS MACRO SHOCK

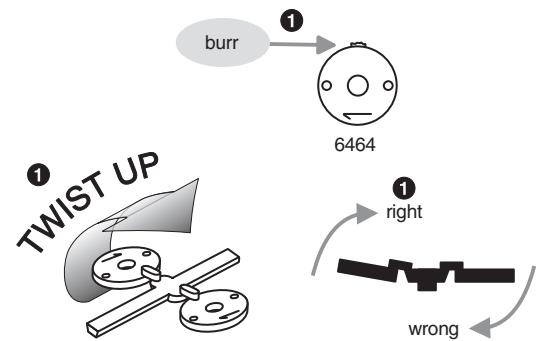
The VCS™ (Volume Compensating System) Macro Shock debuted in Associated's RC10L3 Oval kit, winning instant acclaim for its smoothest-possible, most consistent dampening.



step 1

TRIM SHOCK PISTON

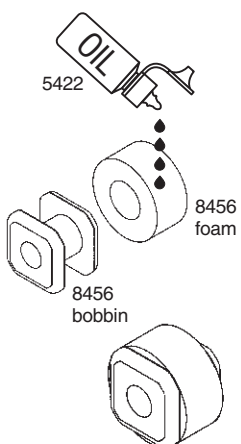
- 1 Burrs interfere with smooth shock action within the shock body. To remove from tree without creating burrs, twist up, not down. Remove one #1 shock piston.
- 2 Remove remaining burrs carefully with hobby knife.



step 2

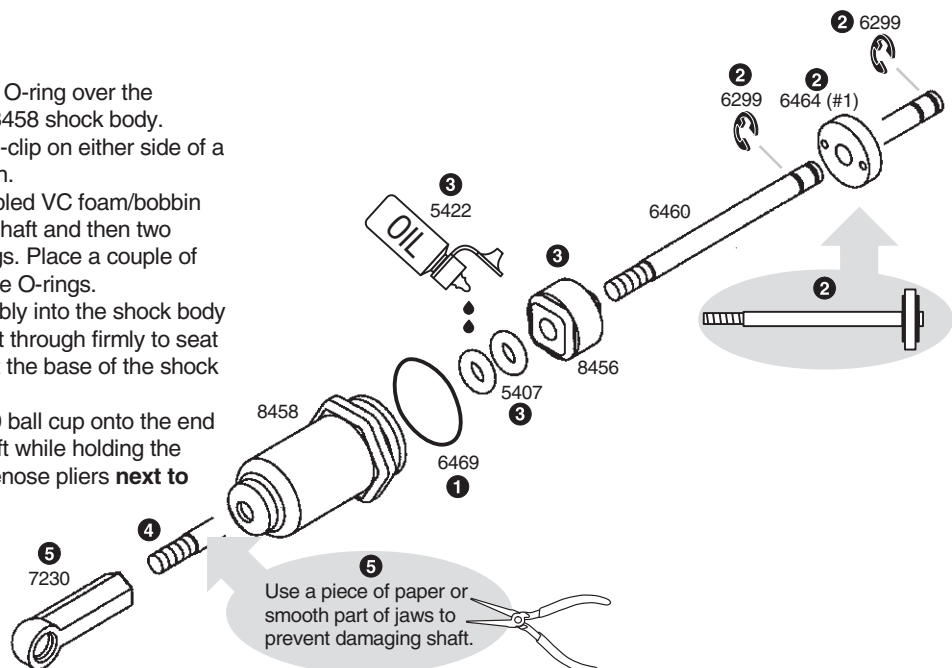
VC FOAM AND PISTON

Soak the #8456 VC foam with #5422 shock oil and install it onto the #8456 VC bobbin.



step 3

- 1 Install the #6469 O-ring over the threads of the #8458 shock body.
- 2 Install a #6299 E-clip on either side of a #6464 (#1) piston.
- 3 Slide the assembled VC foam/bobbin over the #6460 shaft and then two #5407 red O-rings. Place a couple of drops of oil on the O-rings.
- 4 Insert the assembly into the shock body and pull the shaft through firmly to seat the VC bobbin at the base of the shock bore.
- 5 Screw the #7230 ball cup onto the end of the shock shaft while holding the shaft with needlenose pliers **next to threads**.

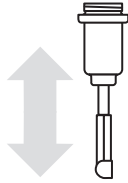


step 4

- 1 Holding the shock upright, fill with oil to the top of the body.



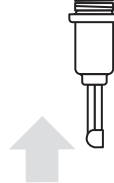
- 2 Slowly move the shaft up and down several times to allow air bubbles to escape to the top.



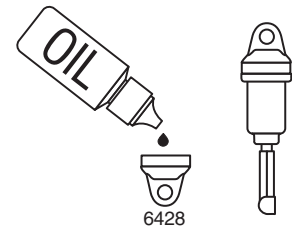
- 3 Refill with oil to the top of the body.



- 4 Push the shaft up until the piston is level with the top of the body. The oil will bulge up above the shock body.



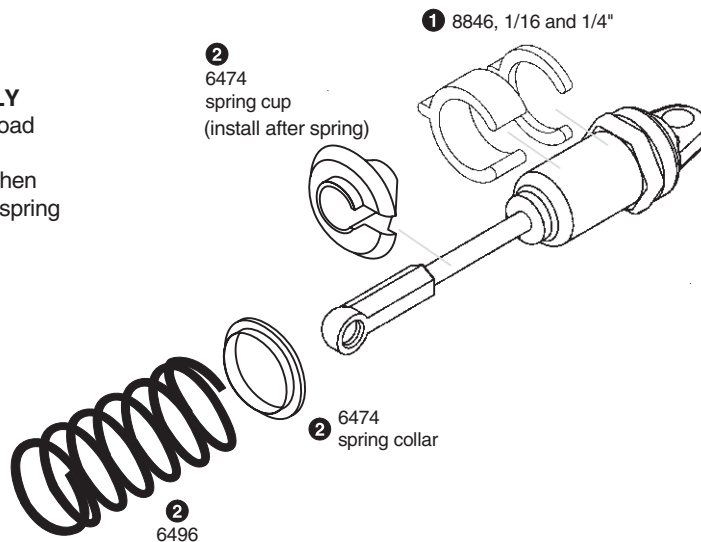
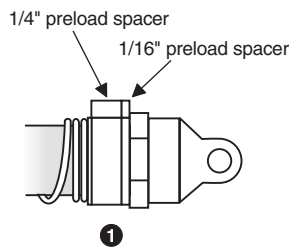
- 5 Fill The #6828 shock cap about halfway with oil and install onto the body. Try to retain as much oil as possible during assembly. The shaft will extend out as you tighten the cap down.



step 5

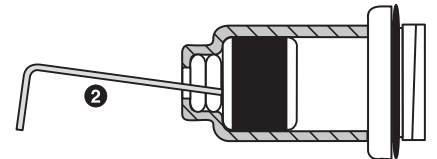
FINAL SHOCK ASSEMBLY

- Slide the 1/16 and 1/4 preload spacers onto the body.
- Slide on the spring collar, then spring, then compress the spring to add the spring cup.



DISASSEMBLY

- To take out the VC foam/bobbin, unscrew the ball cup and shock cap, and push the shock shaft out.
- Push your Allen wrench tip into the shock bottom and push the bobbin out, as shown. The O-rings should just fall out by themselves.



TEAM ASSOCIATED ONLINE!

<http://www.teamassociated.com>

Get online help, tips, and new products for your kit through Team Associated's web site!

Tech Help, where answers to racers' questions are posted for all to learn from.

Racer Spotlight, where other racers proudly show off their favorite kit.

Setup Sheets, where racers go to find blank and standard setups to download for their kit.

New Products, where you learn of new kits and parts before they are announced anywhere else!

Team Associated Insiders Newsletter. Sign up for it on the Home Page if you want news delivered right to your e-mail box!

AE 125-2S

Question of the Week. Join in and give your opinion of the topic of the week, and learn from other racers.

Hobby Shop and Track listings. Shops that carry Associated parts and where you can race your kit.

R/C Kits and Parts. Online catalogs updated with new parts as soon as they come out.

Feedback Form. Tell us what's on your mind with this exhaustive survey.

Help Form. Our expert staff answers your toughest questions about Associated, Reedy, and LRP products.

Free Stuff. Get your Associated kit computer wallpaper and screensavers here!