

# RC10

## CONVERSION KIT

### READ THIS BEFORE FOLLOWING THE INSTRUCTION MANUAL.

We have attempted to make your kit conversion easy and orderly by this three-step format, so please read these steps carefully and follow them in order.

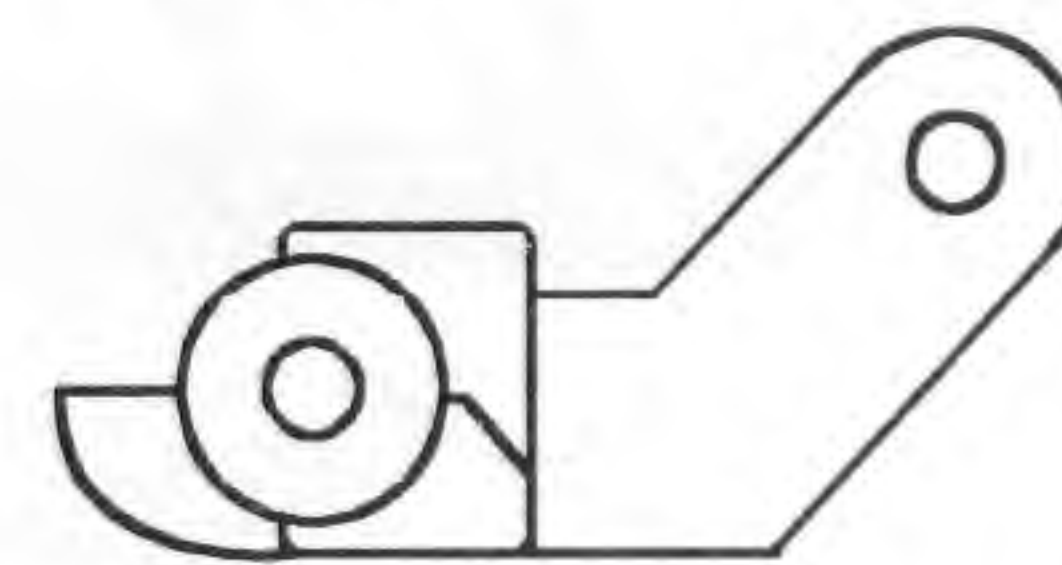
**Step 1** This #8089 RC10DS Conversion Kit assumes you have a complete vehicle on hand, with no missing parts. It is designed to convert any existing RC10 car or RC10T truck kit produced after 1991. Older kits can still be converted, but you may have to replace or modify a few additional parts because of design changes over the years. Associated off road car or truck kits that **cannot** be converted are the RC10B2 or the RC10T2 (our latest off road kits) or RC10's or RC10T's with a **graphite chassis** (the kick up portion is part of the graphite chassis and cannot be removed for conversion).

If you have questions about kit parts or assembly, you can **call Customer Service at 714-850-9342**. We will do our best to explain how the part works or why you need to change it.

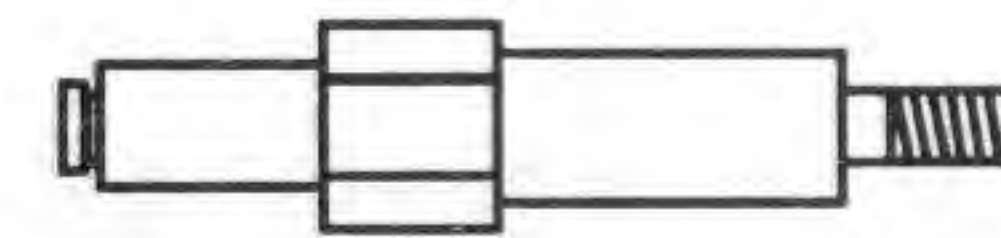
**Step 2** The sections below are grouped around bags. Read each section carefully and remove those parts from your vehicle that are mentioned in that section, and group them with that bag. Not all bags in your kit are listed here, only those that you need to supplement with parts from your old vehicle.

#### BAG 8-1

You will need to supply the following parts from the front of your existing vehicle: Two front inline axles and the matching two inline axle steering blocks. You will also need the four screws that hold the aluminum nose brace tubes onto the chassis parts. The final item needed will be the small 8-32 x 1/4" flat head machine screw (silver colored) that helps hold the nose plate to the chassis. This is the one in the center of the chassis at the back of the nose plate. The following drawings show the only axle that **WILL NOT** work with this car, with its matching nylon steering block. It is the original #6219 steel trailing axle design.



#6216  
(orig. RC10)



#6219  
(orig. RC10)

#### BAG 8-7

You will also need to use all of the battery cups parts and fasteners from your old car or truck. You will only need one strap and cup and hardware to match the parts in the instruction manual.

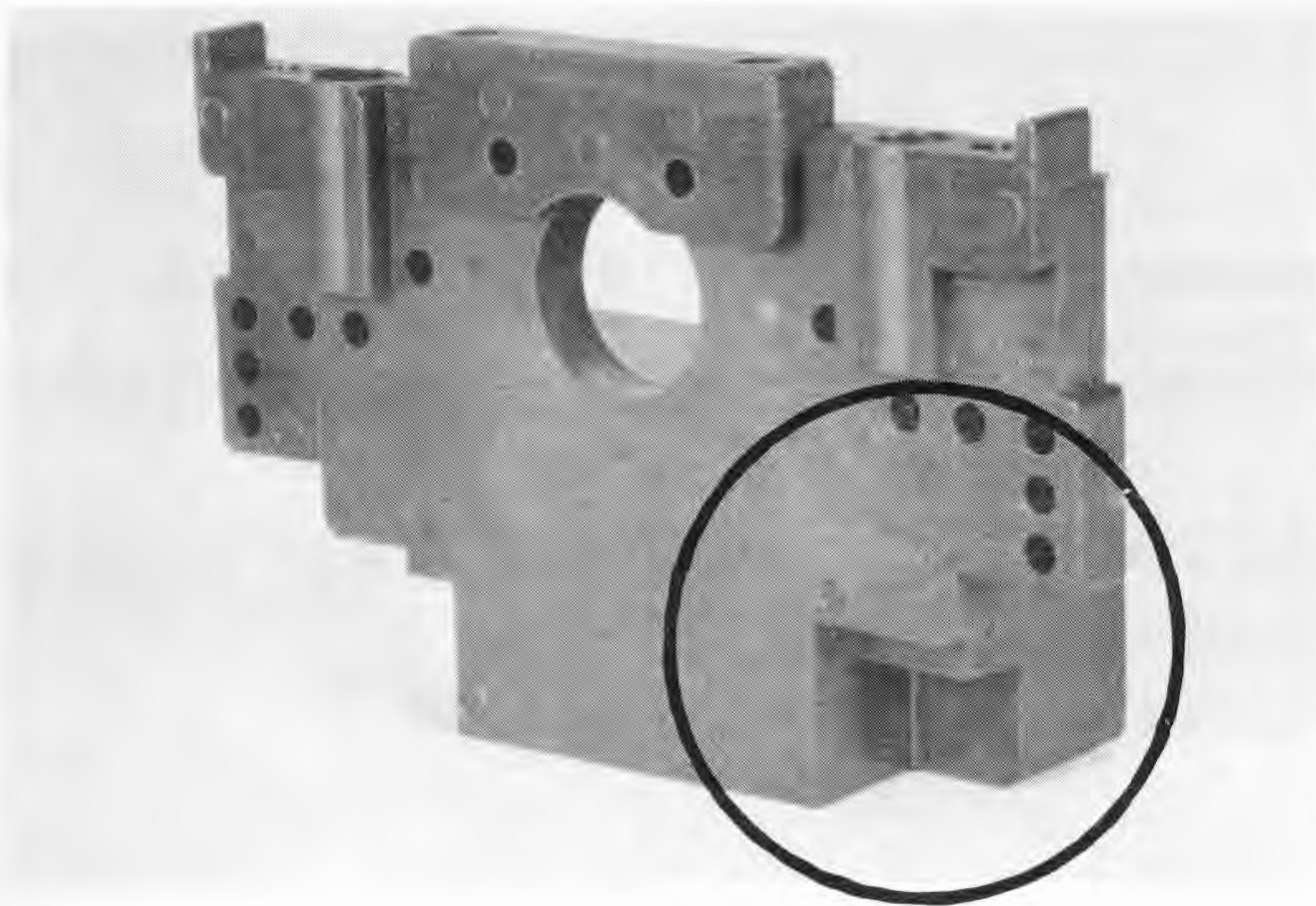
#### BAG 8-8

For the rear end we will supply all of the parts except for the rear bulkhead, transmission assembly, the transmission brace (that goes from the top of the rear bulkhead to the top of the transmission) and the four screws that hold the transmission brace to both parts.

Because the rear axles are a new design it requires a different bushing or bearing. All of the

RC10's and RC10T's use a 1/4" I.D. rear axle. This new kit uses a new 3/16" axle, which makes the rear ball bearings stronger without having to increase weight or change suspension geometry. Because you may not have the correct bushing or ball bearing, we have supplied four bushings that can be used to assemble the car. The correct size is a 3/16" x 3/8" unflanged design (ball bearing part number #6906). This is the same size as used on the two upper gears inside the Stealth transmission, the front wheels of the truck, or with the buggy's dished three piece front wheels.

**Note: Older RC10 kits may have an early design bulkhead which does not have the notches for the rear suspension mounts. Figure 1 shows the chassis area and rear bulkhead to help you determine if you need to make this change.**



**Fig. 1** If your bulkhead is different, you will need to modify or replace it.

#### BAG 8-9 AND 8-10

In order to mount the front and rear shocks you will need to keep the four #6927 4-40 x 3/4" socket head cap screws that secure the shocks to the fiberglass shock strut along with the four #6473 nylon shock bushings that the cap pivots on.

#### BAG 8-13

We have made the assumption that you already own or are going to purchase an electronic speed control to use with this vehicle. Due to this

assumption, the conversion kit does not come with a mechanical speed control (bag #8-13).

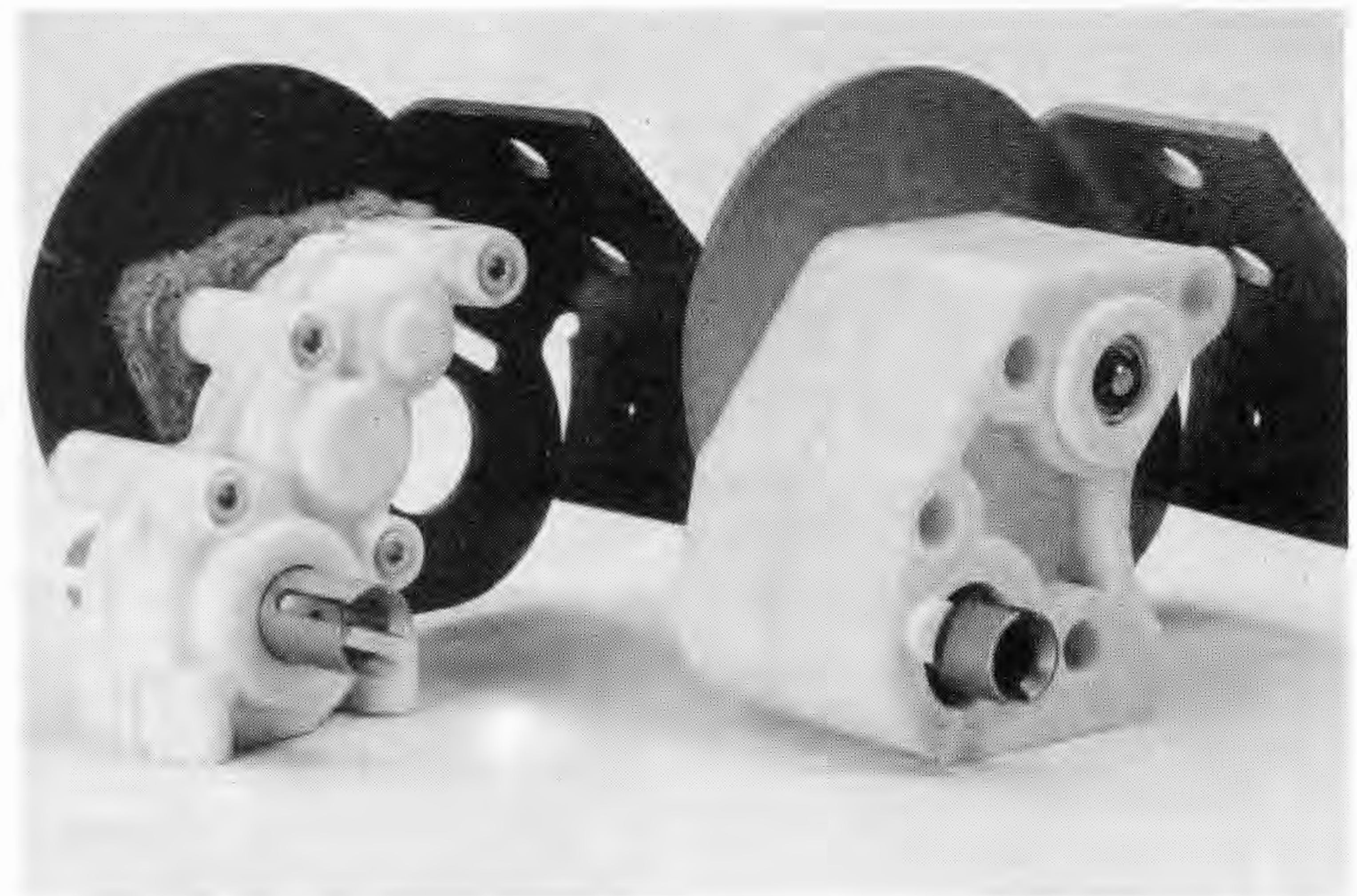
#### BAG 8-14

We are supplying new #6274 plastic ball end cups, but you will need to remove and reuse your existing steel short and long ball ends. **Note: Early buggy kits come with a standard size 4-40 plain nut. These will work but can reduce the amount of clearance you may have in a couple of locations.**

#### TRANSMISSION

You will be installing the transmission you already have, so make sure you use the same existing mounting screws or supply your own replacements. **Note: Please look closely at the outdrives on your transmission. If the outdrives are worn where the dogbones will ride, we recommend replacing the outdrives so that you will not have any decrease in performance or handling with your kit. Worn outdrives will cause early wear on the dogbones and can increase the chance for parts failure.**

It may also be possible to use some of the aftermarket transmissions that were designed for the RC10, but it will be up to you to determine the compatibility of these transmissions with this car conversion (see fig. 2).



**Fig. 2** Check that you have either of these above transmissions and not an aftermarket one. Left: Stealth tranny. Right: Original RC10 transmission.

## WHEEL BAG

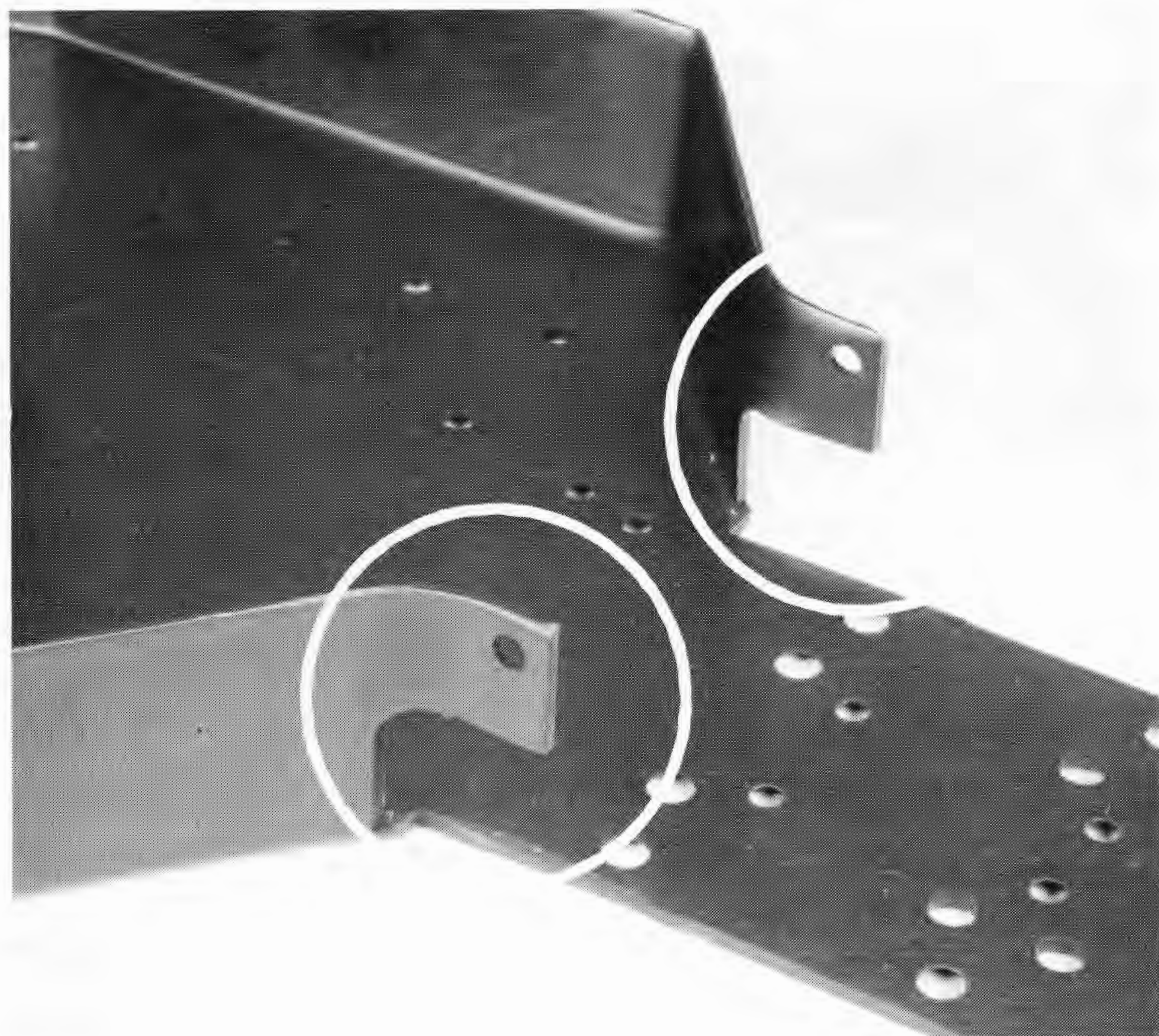
All rear axles we have use the same 8-32 locknut to secure the wheel, so you will be able to reuse your existing axle nuts. Because you are supplying the front axles, you will be able to do the same for the front axle nuts. The front wheels for this car use a 3/16" x 3/8" unflanged designed bushing or bearing. Some of the early buggy kits used a 3/16" x 5/16" flanged bushing or ball bearing. Because of this we have supplied four #6599 3/16" x 3/8 unflanged bushings to allow you to mount the front wheels.

## TOOL BAG AND SHOCK/TURNBUCKLE TOOL

Again, because you will already have the tools and shock/turnbuckle wrench from your existing kit, we will not be supplying any of the tools shown in the manual in fig. 1.

## KIT BOX

You will be using your existing RC10 or RC10T aluminum tub chassis. On some very early kits the back of the chassis where the rear suspension mounts and bulkhead mount the tub was trimmed differently. Figure 3 show the area at the back sides of the chassis where the changes were made. Compare your chassis to fig. 3.



**Fig. 3** If your chassis is different from the one in

*this photo, you will need to file your chassis to match the photo, or replace it.*

---

**Step 3** After you have modified or bought any extra parts you need, and have grouped your parts according to step 2 above, then turn to the instruction manual. The instruction manual shows the complete assembly of the RC10DS kits. You must adapt the instructions to the parts you removed from your old vehicle, and use the parts supplied with the conversion kit. The bag numbers mentioned in the manual refer to the same labeled bags in your kit.

---

**20 TEAM ASSOCIATED**

**ASSOCIATED ELECTRICS, INC.**  
3585 Cadillac Ave.  
Costa Mesa, CA 92626