

SUPPLEMENTARY SHEET

For RC10T3 Team Built Trucks only.

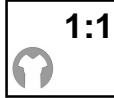
This page replaces page 13 of your RC10T3 instruction manual.

BAG E

REMOVE THESE PARTS FOR: Steps 1-2



6466, qty 4
1/16" spacer



6299, qty 4
E-clip



7369, qty 2
roll pin



7368, qty 4
thin shim



3977, qty 4
3/16 x 3/8 bushing
unflanged



5407, qty 2
red O-ring



9263, qty 2
rear outer hinge pin



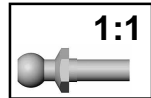
7361, qty 2
dogbone



7260, qty 2
4-40 nut



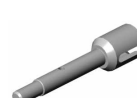
6272, qty 2
dust cover



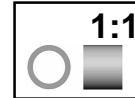
6273, qty 2
ball end



7366, qty 2
hub carrier



7378, qty 2
stub axle



7377, qty 2
bearing spacer

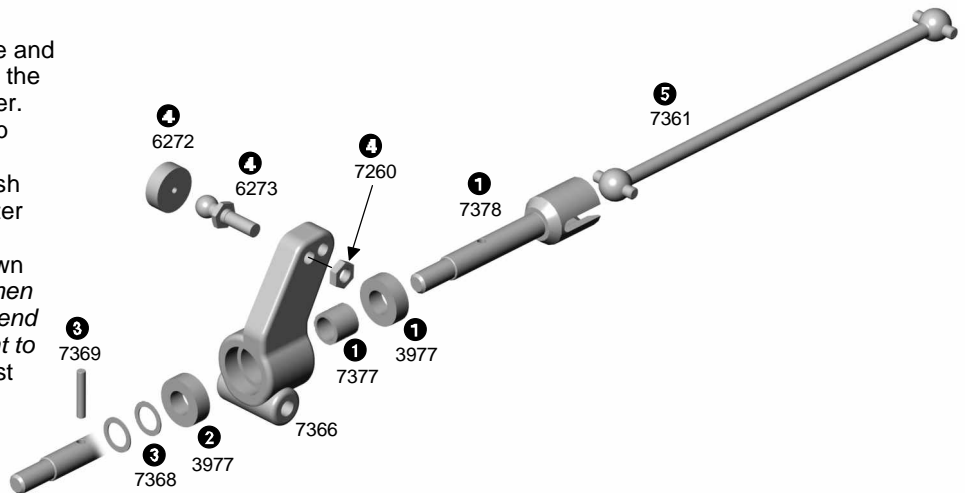
TOOLS USED

.050"

step 1

ASSEMBLE REAR AXLES

- Slide one #3977 bearing onto the #7378 axle and one #7377 bearing spacer on the axle. Push the axle into the back of the #7366 left hub carrier.
- Install the second #3977 bearing into the hub carrier.
- Slide two #7368 thin shims onto the axle. Push the #7369 roll pin into the axle hole and center both ends outside.
- Thread the #6273 ball end into the hole shown and add the #7260 nut to the other side. (When you do the other hub carrier, thread the ball end into the other side so both ball ends will point to the front when assembled.) Add a #6272 dust cover to the ball end.
- Slide the #7361 dogbone into the axle.



step 2

MOUNT REAR HUB CARRIERS

- Push the #5407 O-ring into the outdrive of the transmission, then the dogbone and hub carrier assembly into the transmission outdrive. The dogbone pins should slide into the slots of the outdrive.
- Place the hub carrier assembly and two 1/16" #6466 spacers between the arms holes. The spacers are on the back side of the hub carrier, which pushes the hub carrier closer to the front axle, shortening the wheelbase.
- Install the #9263 hinge pin through arm, spacers and hub carrier. Install two #6299 E-clips.
- Assemble and mount the other side.

