

#3430 1/12 DIFFERENTIAL INSTRUCTIONS

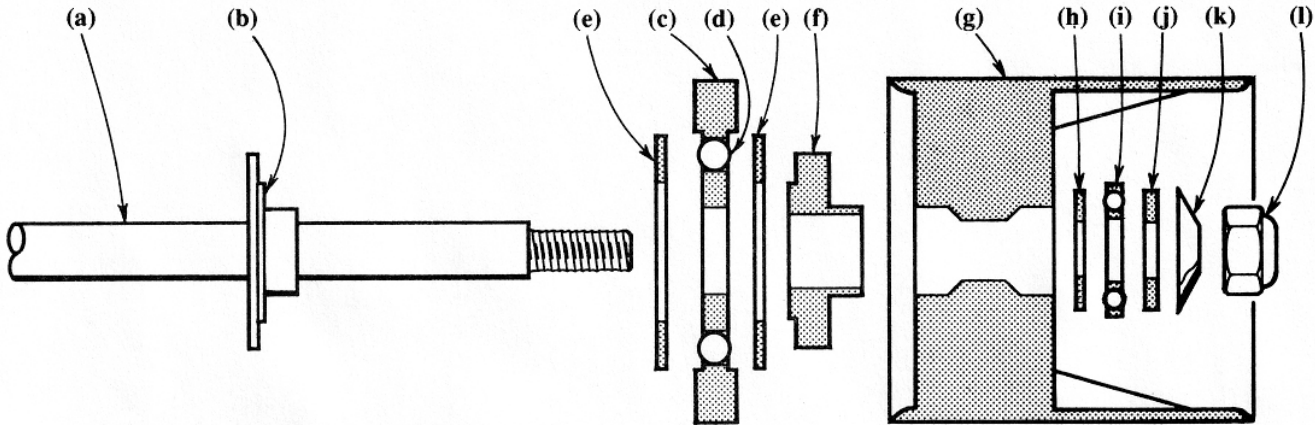


fig. 1

STEP 1 Place the gear (c) on a flat surface and take one ball (d) at a time and snap them into the square holes in the gear. (To remove the balls, simply push them with a small screwdriver or similar thin tool and they will pop out for use in another gear.)

STEP 2 To make the differential easier to assemble, we suggest you temporarily install a wheel on the axle (a) on the opposite side from the differential. Holding the axle in a vertical position, threaded end up, slide the parts on in the order shown in fig. 1. The unthreaded portion of the axle should extend into—but not through—the last thrust washer (j) (the thickest washer). If the axle extends past the last thrust washer, add the thin shim washers (included with kit) between the wheel (g) and the first washer (h) to shim the thrust bearing assembly (h, i, j, k, l) until the axle is flush or slightly inside the last thrust washer (j).

STEP 3 Tighten the 10-32 nut (l) until the differential starts to feel stiff when you turn the wheels in opposite directions. Now loosen the nut 1/8 turn; then while holding both tires, use your thumb and attempt to slip the gear (c) by pushing on it. Keep loosening and pushing until you can slip the gear, then tighten the nut 1/8 turn. The differential should work freely now and by holding the gear and rotating one wheel the other wheel will turn freely in the other direction.

STEP 4 Your differential is now set and ready to install in your car. Under most conditions this current setting will be right. Less differential action can be achieved by tightening nut (l) 1/8 turn at a time until you reach the amount of slip you need.

When you need to change your gears or wheels, you don't need to remove the differential from your car—just replace the part you wish to change and readjust as explained in step 4.

TIP: To align the outer drive ring (e) more easily, you can add a drop of super-glue to the face of the hub (f) that the ring seats on. Hold the ring firmly against the hub until the glue sets. The glue will hold the drive ring in place while you assemble the differential.

REPLACEMENT PARTS

Letter	Description	Part #
(a,b)	Rear axle. Also includes shims and belleville washer (k)	3431
(c)	Spur gear, 44T, 32P	3425
(c)	Spur gear, 46T, 32P	3426
(c)	Spur gear, 48T, 32P	3427
(c)	Spur gear, 54T, 32P	6653
(d)	Ball set, pkg of 16	3432
(e,f)	Drive ring set	3433
(h,i,j)	Thrust ball bearing set	3434
(k)	Belleville washer/shim set	3435
(l)	Aluminum 10-32 locknut, pkg of 6	3436