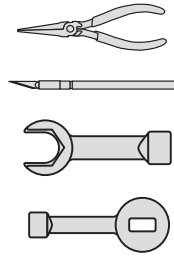


#3905 TC3 COMPOSITE SHOCK KIT

#3905 PARTS LIST

5407	red O-ring
6299	E-clip
6428	shock cap
6465	shock piston
6469	shock cap O-ring
6475	spring collar and spring cup
7217	shock pivot ball and shock eyelet
8456	VC bobbin and foam
8458	macro shock body
8844	shock shaft, .35 stroke
8846	shock preload spacer

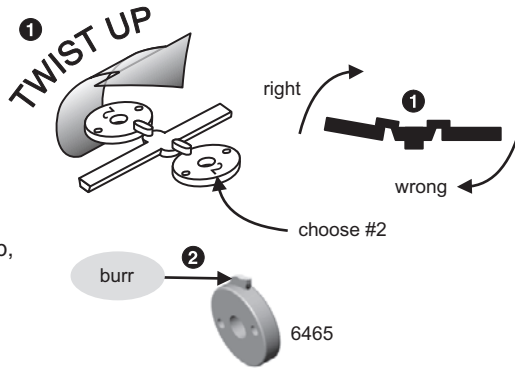
TOOLS USED



step 1

TRIM SHOCK PISTON

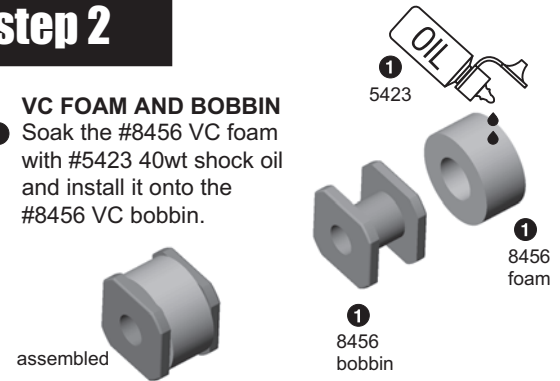
- 1 Burrs on the #6465 shock piston interfere with smooth shock action within the shock body. To remove from tree without creating burrs, twist up, not down. Remove four #2 shock pistons.
- 2 Remove remaining burrs carefully with a hobby knife.



step 2

VC FOAM AND BOBBIN

- 1 Soak the #8456 VC foam with #5423 40wt shock oil and install it onto the #8456 VC bobbin.



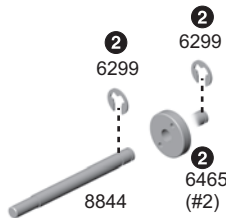
step 3

INTERNAL SHOCK ASSEMBLY

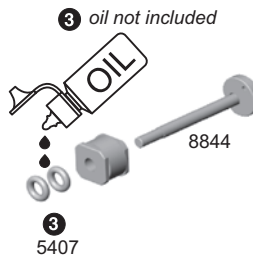
- 1 (Assemble all four shocks at once.) Install the #6469 O-ring over the threads of the #8458 shock body.



- 2 On the #8844 shock shaft, install a #6299 E-clip on both sides of a #6465 (#2) piston from step #1.

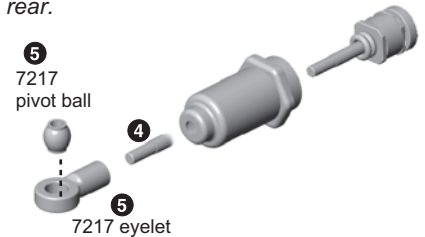


- 3 Slide the VC foam/bobbin assembly over the #8844 shaft and then two #5407 O-rings. Place a couple drops of oil on the O-rings.



- 4 Insert the assembly into the shock body and pull the shaft through firmly to seat the VC bobbin at the base of the shock bore.
- 5 Push the #7217 pivot ball and eyelet together. As you hold the shaft with a rag and needlenose pliers next to threads, screw the eyelets onto the end of the shock shaft.

TIP: Use a permanent marker to mark your shocks with an F and R to designate front and rear.



see other side to continue assembly

step 4

- 1 Holding the shock upright, fill with oil to the top of the body.
- 2 Slowly move the shaft up and down several times to allow air bubbles to escape to the top.
- 3 Refill with oil to the top of the body.
- 4 Push the shaft up until the piston is level with the top of the body. The oil will bulge up above the shock body.
- 5 Fill The #6428 shock cap about halfway with oil and install onto the body. Try to retain as much oil as possible during assembly. The shaft will extend out as you tighten the cap down.

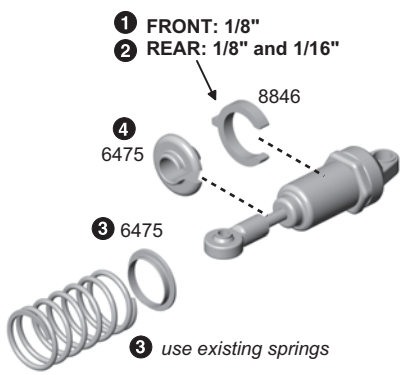
SETTING THE REBOUND

- 6 Move the shock shaft in and out a few times an then push it all the way in. It should be easy to push the shaft in until the eyelet hits the body
- 7 Then the shaft should push itself out to its full length very slowly.
- 8 If the shock does not push out this far there is not enough oil in it. Add just a little oil and try steps 6-7 again.
- 9 If the shock rebounds too fast, or you cannot push the shaft in until the eyelet hits the body, there is too much oil. Loosen the cap about a full turn and pump out a small amount of oil by pushing the shaft in. Retighten the cap and try steps 6-7 again.
Too much oil in the shock will result in leakage.

step 5

FINAL SHOCK ASSEMBLY

- 1 Slide the 1/8" #8846 preload spacer onto the body of the two front shocks.
- 2 Slide the 1/8" and 1/16" preload spacers onto the rear shocks.
- 3 Slide on the #6475 spring collar, then #3944 gold spring on the front shocks, and #3942 silver spring on the rear shocks.
- 4 Compress the spring to add the #6475 spring cup.

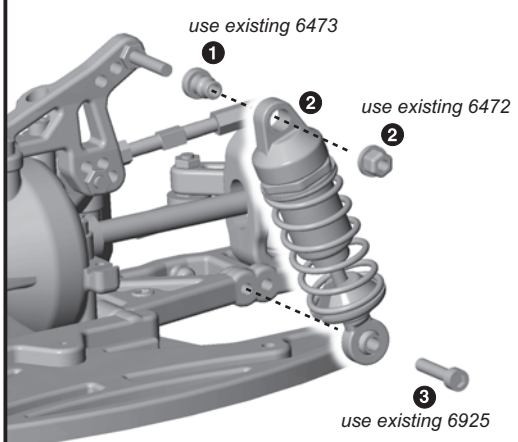


See page 25 of manual to set ride height.

step 6

FRONT SHOCK MOUNTING

- 1 Add the #6473 shock bushing to the shock tower.
- 2 Push the shock cap over the bushing and add the #6472 nut. **Do not overtighten or the shock will bind.**
- 3 Fasten the lower shock into the arm's inside hole with the #6925 screw.
- 4 Do the other front shock.



step 7

REAR SHOCK MOUNTING

- 1 Add the #6473 shock bushing to the rear shock tower.
- 2 Push the shock cap over the bushing and add the #6472 nut. **Do not overtighten or the shock will bind.**
- 3 Fasten the lower shock into the arm's outside hole with the #6925 screw.
- 4 Do the other rear shock.

