

# #4147 RC12i CHASSIS RIDE HEIGHT ADJUSTER

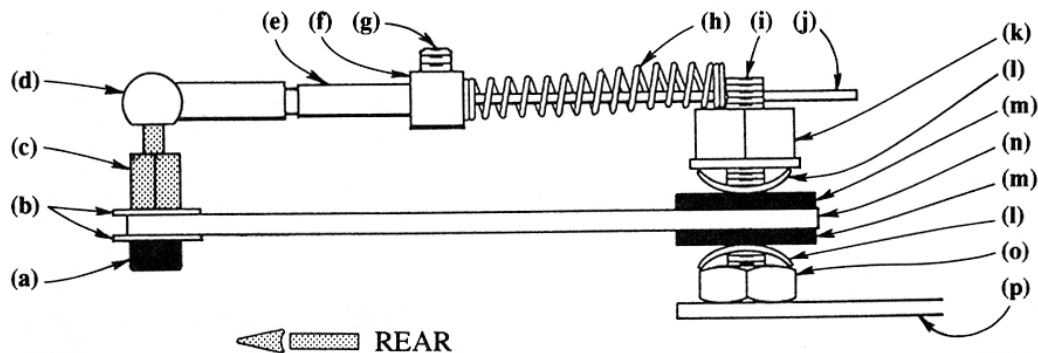


fig. 1

**STEP 1** Slide the screw (i) up through the radio tray (p) and assemble the parts onto it as shown (fig. 1).

**STEP 2** Screw the 4-40 screw (a) into the DuBro #180 ball socket (c), adding the two small washers (b) to either side of the damper plate (n).

**STEP 3** The enclosed piano wire (j) must first be soldered inside the brass tube (e). When it has cooled, screw on the DuBro plastic ball end (d). Then slide the collar (f) and spring (h) onto

the wire and slide the wire through the hole in the screw (i).

**STEP 4** Turn the locknut (k) so the fiber washers (m) have only slight pressure against the damper plate (n). This adjustment is the **most important** feature of the RC12i Ride Height Adjuster; **the damper plate must be free to move smoothly in any direction.**

**STEP 5** Move the adjusting collar (f) against the spring until the chassis does not sag, and tighten in place with the set screw (g).

## REPLACEMENT PARTS

- (a) 4-40 x 1/4 screw, 6 pc. . . . . #4145  
 (k) 8-32 nylon locknut, 6 pc. . . . #4185

- (b) Axle washer, 12 pc. . . . #3216  
 (i, k, l, m, o) Damper washer set . . . #4146

- (i) 8-32 x 7/8 screw, 6 pc. . . . #4181