



PICTORIAL CATALOG

www.TEAMASSOCIATED.com
 3585 Cadillac Ave.
 Costa Mesa, CA 92626
 (714) 850-9342 • June 2004

TOOLS



FACTORY TEAM DROOP GAUGE.
 #3987 \$2.00



BODY MOUNTING HOLE REAMER.
 #1594 Body Reamer \$22.00
 #1593 Reamer tip \$9.95



FACTORY TEAM CAMBER + TRACK WIDTH TOOL.
 #1719 \$3.50



FACTORY TEAM RIDE HEIGHT GAUGE.
 #1450 \$14.99



FACTORY TEAM TURNBUCKLE WRENCH.
 #1110 \$1.50



CLUTCH NUT WRENCH, 3/8".
 #1721 \$2.00




ASSOCIATED MOLDED TOOL SET. Wrenches to install 11/32", 1/4", and 3/16" nuts, adjust 1/8" and 3/16" turnbuckles, and install and remove Associated shock caps.
 #6956 \$4.50



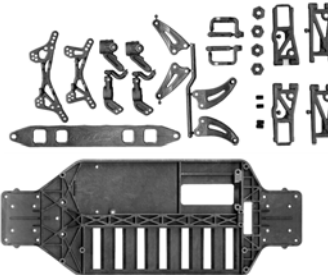
BODY SCISSORS.
 #1737 \$5.99

TOOLS



ALLEN WRENCH SET.
 3/32", 1/16", .050, .027
 #6950 \$2.50

UPGRADE KITS



TC3 FULL GRAPHITE COMPONENT SET.
 #3961 \$75.00

T4 FULL CARBON PARTS SET (not shown).
 #7467 **NEW!** \$70.00



B4 FULL CARBON PARTS SET.
 #9655 \$70.00

Nitro TC3 CARBON CHASSIS/SUSPENSION KIT, Ver 2. NOT for kits 2030, 2031, 2040.
 #2342 \$67.99



Nitro TC3 CARBON CHASSIS/SUSPENSION KIT. For kits 2030, 2031, 2040.
 #2371 \$67.95

Nitro TC3 CARBON CHASSIS/SUSPENSION KIT. For kits 2030, 2031, 2040.
 #2371 \$67.95

Nitro TC3 CARBON CHASSIS/SUSPENSION KIT. For kits 2030, 2031, 2040.
 #2371 \$67.95



GT UPGRADE KIT. Converts tub chassis GT to new flat chassis.
 #7056 pull start \$59.95
 #7057 non pull start \$59.95

UPGRADE KITS



10L30 FACTORY TEAM "BIAS-TRAY" CHASSIS KIT. The battery tray shifts battery weight forward and back on the chassis in small increments. The tray's wider slots permit mounting the batteries closer to the centerline or farther away.
 #8485 4 cells \$99.99
 #8486 6 cells \$99.99

CONVERSION KITS



TC3 200mm CONVERSION KIT. Converts 190mm to 200mm. (Not for Nitro TC3.)
 #1451 \$59.95



TC3 RALLY CONVERSION KIT. Convert your TC3 to a Rally version. (Not for Nitro TC3.)
 #3020 \$79.99

NTC3 CONVERSION KIT to Ver. 2 Rear Suspension. For kits 2030, 2031, 2040. Includes: Rear shock tower, rear susp. arms, rear hub carriers, turnbuckle eyelets, rear arm mounts, turnbuckle eyelet balls, hardware.
 #2319 **NEW!** \$35.00

OTHER ITEMS



GREEN SLIME SHOCK LUBE.

Place on inner shock parts for smoother shock action.

#1105 4cc \$2.50



FACTORY TEAM TIRE ADHESIVE.

Glue tires to rims.

#1597 .7oz. \$6.95



FACTORY TEAM LOCKING ADHESIVE.

#1596 10ml \$3.95



BLUE ANODIZED SHOCK CAPS.

#1598 qty 4 \$11.95

#6439 qty 1 \$3.00

#25404 qty 4 for MGT \$19.99



ASSOCIATED REFERENCE LIBRARY CD-ROM. Catalogs and manuals of many kits on one CD-ROM. Great for shop owners. *Test-drive it online!*

#6981 \$11.95

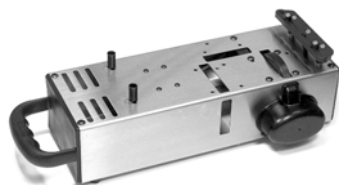


PIT TOWEL.

Measures 43 3/4" x 23 1/4"

#SP-412 \$15.00

OTHER ITEMS



NTC3/GT STARTER BOX.

#1750 \$99.99



FACTORY TEAM GLOW STARTER with Charger.

Blue anodized handle, 110v.

#1738 \$29.99

CAPS



REEDY CAP. Buckle back adjustable. One size fits all.

#SP-408 Tan \$15.95*



AE LOGO CAP. Stretch fit.

#SP-409S, small-med \$19.99*

#SP-409L, med-large \$19.99*

SPRING SETS



TRUCK FRONT SPRINGS.

Green, Silver, Blue, Gold, Red springs.

#1580 \$11.99



BUGGY FRONT SPRINGS.

Black, Green, Silver, Blue springs.

#1581 \$8.99



TRUCK/BUGGY REAR SPRINGS.

Green, Silver, Blue, Gold, Red springs.

#1582 \$11.99

OVAL/ONROAD SPRINGS. (not shown)

10 different pairs of springs.

#1583 \$18.99

TC3/NTC3 SPRINGS. (not shown)

Green, Silver, Blue, Gold, Red, Copper, Purple, Yellow, White springs.

#3988 \$34.99

Monster GT SPRINGS. (not shown).

Four each per Blue, Gold, and Red springs.

#3988 \$34.99

COMPLETE TUNING GUIDES

COMPLETE TUNING GUIDE SERIES. Understand how to set up your car to win with these setup tips by the Team Associated staff.



Downloadable e-Books below are available through web site ordering ONLY.

Complete Tuning Guide: NTC3.

#2382 e-Book (PDF) \$5.95

Complete Tuning Guide: TC3.

#3847 e-Book (PDF) \$5.95

Complete Tuning Guide: B4.

#9656 e-Book (PDF) \$5.95

Complete Tuning Guide: B3.

#6197 e-Book (PDF) \$5.95

Complete Tuning Guide: GT.

#7190 e-Book (PDF) \$5.95

Complete Tuning Guide: T4.

#7468 e-Book (PDF) \$5.95

Complete Tuning Guide: T3.

#7191 e-Book (PDF) \$5.95

Performance Tuning CD.

All tuning guides on one CD!

#6991 CD-ROM \$11.95

DECALS

All decals are Mylar peel-and-stick except bumper stickers.



TEAM ASSOCIATED LOGOS.

#3820 \$2.00



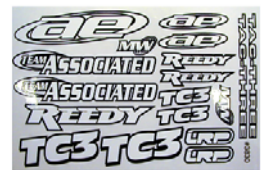
FACTORY TEAM LOGOS.

#3825 \$2.00



REEDY MODIFIED.

8.5" X 5.5". #717 \$2.50



TEAM DECALS.

#3830 \$2.00

RC10 logo #3807 \$2.00

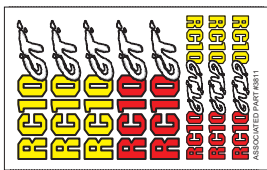
RC10T logo #3808 \$2.00

RC12L logo #3809 \$2.00

RC10L logo #3810 \$2.00

RC10DS logo decal #8801 \$2.00

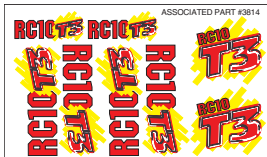
DECALS



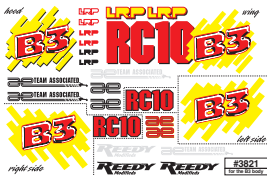
#3811 GT logo \$2.00

RC10T2 logo (not shown) #3812 \$2.00

RC10B2 logo (not shown) #3813 \$2.00



#3814 T3 logo \$2.00



#3821 B3 logo \$2.50



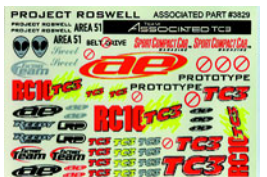
#3822 10L3O logo \$2.00



#3826 12L3O logo \$2.00



#3828 10L3T logo \$2.00



#3829 TC3 logo \$2.00



NITRO TC3 logo #3832 \$2.50

DECALS



RC10L4O logo #3835 \$2.50



RC12L4 logo #3837 \$2.50



RC10B4 logo #9650 \$2.00



RC10T4 logo #7458 \$2.00



Monster GT logo #25425 2.50

DECALS



for the RC10GT #7197 \$2.50



for GT & GT RTR bodies #7184B, 7184R #3833 \$2.50

STICKERS



"AMERICAN R/C RACER" BUMPER STICKER. #3816 \$4.00



BUMPER STICKER. 1 large 9.75" X 3.12", 1 small 6" X 1.87". #3817 \$4.00



AE BLUE EMBOSSED. #3834 \$3.00



FACTORY TEAM DRIVER decal. 10" x 4 5/16." #3824 \$2.00

(*) = non-standard discount item.
(**) = short discount or net item.