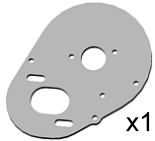
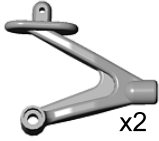


#9587 B4 SUPPLEMENTARY SHEET



9600
Motor Plate x1



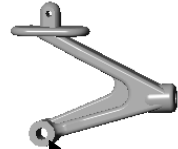
9587
Wing Mount,
left & right x2



3929
S.H. Screw
4-40 x 1.25 x1

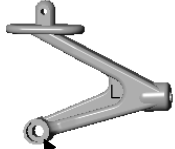
*Do not tighten
this screw until
page 9 step D8.*

right wing mount



solid on one side

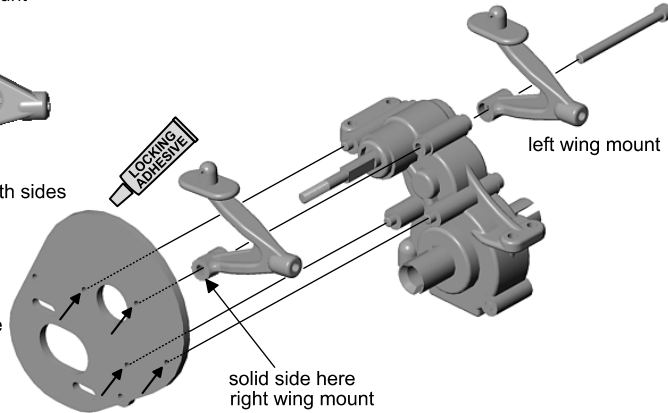
left wing mount



hollow on both sides

Racer's Tip:

Apply a small amount of locking adhesive to these holes to prevent screws from loosening.



For the RC10B4

See instruction manual, page 7, step 15. We have modified one of the wing mounts for better durability. Please note that there are now left and right wing mounts. The left wing mount has hollows in both sides while the right wing mount is hollow on one side. Assemble them as shown here.

Other manual changes

Exploded drawing shows #9680 washers under #6273 ball ends at the front end. Washers should be #9630.

Page 17 step 4 1:1 drawing depicts Servo Link Cup with missing ball cup end.

Page 20, Radio Adjustments, step 5: "bellcranks point straight forward" should read, "the #9576 steering rack is centered under the top plate".

Page 20, Maintenance, Motor Maintenance: "and lubricate the brush" should be omitted.

15

TEAM ASSOCIATED
3585 Cadillac Ave.
Costa Mesa, CA 92626



phone: (714) 850-9342
fax: (714) 850-1744
web site: <http://www.TeamAssociated.com/>