

SUPPLEMENTARY SHEET

For the RC10DS Qualifier kit

We have made the following changes to your instruction manual.

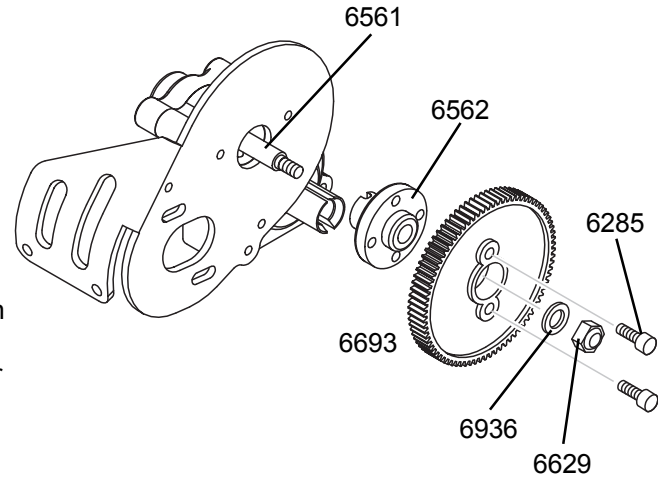
Page 19, Fig 54. We have replaced the #6571 drive gear shaft with the new **#6561 drive gear shaft**. Please mark the change in your manual.

Page 21, Fig. 63, Figs. 64 & 65 We have replaced the entire Associated Torque clutch assembly with the new, inexpensive, **#6562 spur gear adapter**. You will not be using parts #6583, 6584, 6585, 6596, 6594.

Replace the text for Figs. 63-65 with the following text. Slide on the #6562 adapter as shown in the drawing at right so that it fits neatly over the roll pin of the #6561 drive gear shaft. Secure the new spur gear adapter with one #6936 #4 aluminum flat washer and one #6629 5-40 locknut (gold colored) as shown.

Page 67, Fig. 66 Follow the text of Fig. 66 except for the following: We have replaced the #6568 4-40 x 3/16" Button Head screws with the #6285 4-40 x 1/4" Socket Head Cap screws. Push the gear onto the drive shaft as shown. Secure it with two #6285 screws.

These are actual size drawings of the new parts:



TEAM ASSOCIATED