

SUPPLEMENTARY SHEET

For RC10T3 Team Built Trucks only.

This page replaces page 13 of your RC10T3 instruction manual.

BAG E

REMOVE THESE PARTS FOR: Steps 1-2



6466, qty 4
1/16" spacer



6299, qty 4
E-clip



7369, qty 2
roll pin



7368, qty 4
thin shim



3977, qty 4
3/16 x 3/8 bushing
unflanged



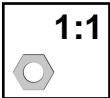
5407, qty 2
red O-ring



9263, qty 2
rear outer hinge pin



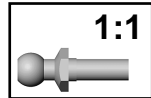
7361, qty 2
dogbone



7260, qty 2
4-40 nut



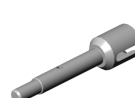
6272, qty 2
dust cover



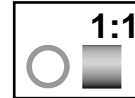
6273, qty 2
ball end



7366, qty 2
hub carrier



7378, qty 2
stub axle



7377, qty 2
bearing spacer

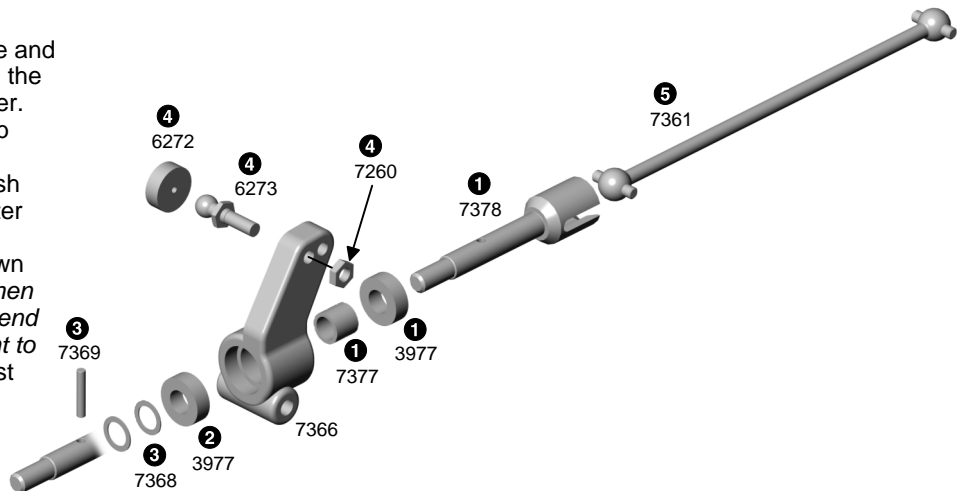
TOOLS USED

.050"

step 1

ASSEMBLE REAR AXLES

- Slide one #3977 bearing onto the #7378 axle and one #7377 bearing spacer on the axle. Push the axle into the back of the #7366 left hub carrier.
- Install the second #3977 bearing into the hub carrier.
- Slide two #7368 thin shims onto the axle. Push the #7369 roll pin into the axle hole and center both ends outside.
- Thread the #6273 ball end into the hole shown and add the #7260 nut to the other side. *(When you do the other hub carrier, thread the ball end into the other side so both ball ends will point to the front when assembled.)* Add a #6272 dust cover to the ball end.
- Slide the #7361 dogbone into the axle.



step 2

MOUNT REAR HUB CARRIERS

- Push the #5407 O-ring into the outdrive of the transmission, then the dogbone and hub carrier assembly into the transmission outdrive. The dogbone pins should slide into the slots of the outdrive.
- Place the hub carrier assembly and two 1/16" #6466 spacers between the arms holes. The spacers are on the back side of the hub carrier, which pushes the hub carrier closer to the front axle, shortening the wheelbase.
- Install the #9263 hinge pin through arm, spacers and hub carrier. Install two #6299 E-clips.
- Assemble and mount the other side.

